

GASTON

VINCENT VAN DUYSSEN (2008)



DESCRIPTION

Gentlemanly name, elegant features... The Poliform armchair, born of the collaboration with Vincent Van Duysen evokes an exclusive style. Available with covering in leather or fabric to interpret a large range of stylistic definition.

Poliform

GASTON

VINCENT VAN DUYSSEN (2008)



TECHNICAL DESCRIPTION

TPOLOGY

armchair

STRUCTURE

painted metal

SEAT/BACKREST

moulded polyurethane with elements in multi-density polyurethane foam and feathers

PRE-COVER

tela cotton e polyester padding

FINAL COVER

removable in fabric non removable in leather

LEATHER ARMREST

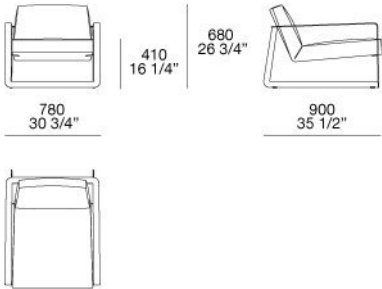
like cushions in leather-imitation leather models; like structure colour in fabric models

Poliform

GASTON

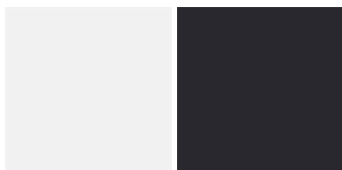
VINCENT VAN DUYSSEN (2008)

GAPL780



GASTON

FINISHINGS\STRUCTURE\PAINTED GLOSSY METAL (2)

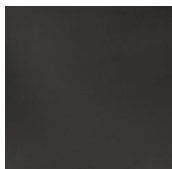


BIANCO

NERO

GASTON

FINISHINGS\STRUCTURE\ BROWN NICKEL MAT PAINTED (1)



BROWN
NICKEL MAT
PAINTED

GASTON

FINISHINGS\STRUCTURE\GLOSSY PAINTEDBROWN NICKEL (1)



GLOSSY
PAINTEDBRO
WN NICKEL

GASTON

FINISHINGS\SEAT\FABRIC (35)



KUSHIRO

SENDAI

NAYORO

KITAMI

CHIOS

ARGO

CORINTO

ITACA



MILOS

OLIMPIA

PAROS

ZANTE

SPARTA

SALFORD

ORLEANS

OXFORD



PERSIA

RABAT

MERIDA

HANNOVER

CORDOBA

CALEDONIA

NORWAY

ASPEN



ATLANTA

BERLINO

KYOTO

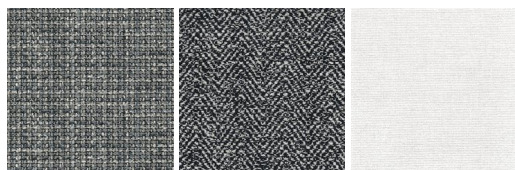
LIMA

MELBOURNE

PORTO

SIVIGLIA

INDRA



LIPSI

SKYROS

NAXOS

GASTON

FINISHINGS\SEAT\LEATHER (8)

							
NABUK LEATHER	VINTAGE LEATHER	SUPER LEATHER	PELLE SPECIAL	AGED- LOOKING LEATHER	COLORS LEATHER	SPRING LEATHER	SOFT LEATHER