

# CAMILLA

R&D POLIFORM (2006)



## DESCRIPTION

A new interpretation of the deep seating armchair, between formal references and essential design. Very thick cushions underline the idea of top comfort and of cosiness.

**Poliform**

# CAMILLA

R&D POLIFORM (2006)



## TECHNICAL DESCRIPTION

### TPOLOGY

armchair

### STRUCTURE

solid wood

### SEAT PADDING

multi-density polyurethane foam and feathers

### PRE-COVER

cotton cloth

### COVER STRETCHED FINAL COVER

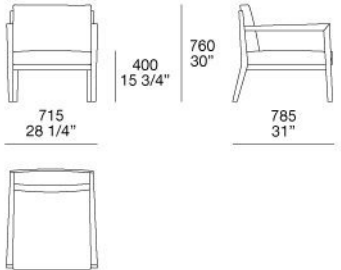
removable fabric leather

**Poliform**

# CAMILLA

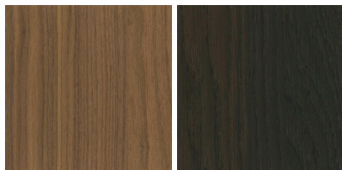
R&D POLIFORM (2006)

S15



# CAMILLA

FINISHINGS\STRUCTURE\WOODS (2)



WALNUT-C

SPESSART  
OAK

# CAMILLA

FINISHINGS\SEAT\FABRIC (35)



KUSHIRO

SENDAI

NAYORO

KITAMI

CHIOS

ARGO

CORINTO

ITACA



MILOS

OLIMPIA

PAROS

ZANTE

SPARTA

SALFORD

ORLEANS

OXFORD



PERSIA

RABAT

MERIDA

HANNOVER

CORDOBA

CALEDONIA

NORWAY

ASPEN





ATLANTA

BERLINO

KYOTO

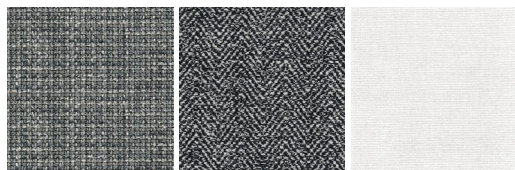
LIMA

MELBOURNE

PORTO

SIVIGLIA

INDRA



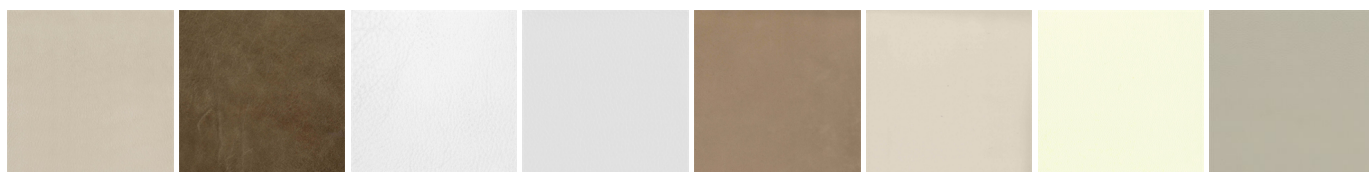
LIPSI

SKYROS

NAXOS

# CAMILLA

FINISHINGS\SEAT\LEATHER (8)



NABUK  
LEATHER

VINTAGE  
LEATHER

SUPER  
LEATHER

PELLE  
SPECIAL

AGED-  
LOOKING  
LEATHER

COLORS  
LEATHER

SPRING  
LEATHER

SOFT  
LEATHER