

SANTA MONICA HOME

JEAN-MARIE MASSAUD (2015)



DESCRIPTION

An armchair with an enveloping design made even more comfortable by the elegant and original headrest. Santa Monica Home, designed by Jean-Marie Massaud, is the ideal evolution of the Santa Monica model. Thanks to a variety of seasonal coverings it adapts perfectly to any space in the living area, to offer an elegant and refined design element that invites relaxation.

Poliform

SANTA MONICA HOME

JEAN-MARIE MASSAUD (2015)



TECHNICAL DESCRIPTION

TPOLOGY

armchair

STRUCTURE AND SEAT

in flexible moulded polyurethane, seat in double-density polyurethane foam

FEET

plastic cylinder or rotating base

PRE-COVER

parts in cotton cloth with inner side in feathers and parts in polyester padding

FINAL COVER

only stretched, removable in fabric and not removable in leather

Stitching

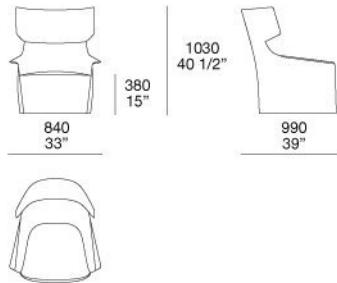
normal double stitch

Poliform

SANTA MONICA HOME

JEAN-MARIE MASSAUD (2015)

SMPL840



Poliform

SANTA MONICA HOME

FINISHINGS\COVER\FABRIC (35)



KUSHIRO

SENDAI

NAYORO

KITAMI

CHIOS

ARGO

CORINTO

ITACA



MILOS

OLIMPIA

PAROS

ZANTE

SPARTA

SALFORD

ORLEANS

OXFORD



PERSIA

RABAT

MERIDA

HANNOVER

CORDOBA

CALEDONIA

NORWAY

ASPEN



ATLANTA

BERLINO

KYOTO

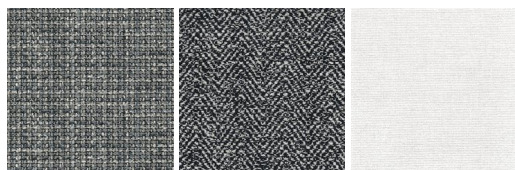
LIMA

MELBOURNE

PORTO

SIVIGLIA

INDRA



LIPSI

SKYROS

NAXOS

SANTA MONICA HOME

FINISHINGS\COVER\LEATHER (8)

							
NABUK LEATHER	VINTAGE LEATHER	SUPER LEATHER	PELLE SPECIAL	AGED- LOOKING LEATHER	COLORS LEATHER	SPRING LEATHER	SOFT LEATHER