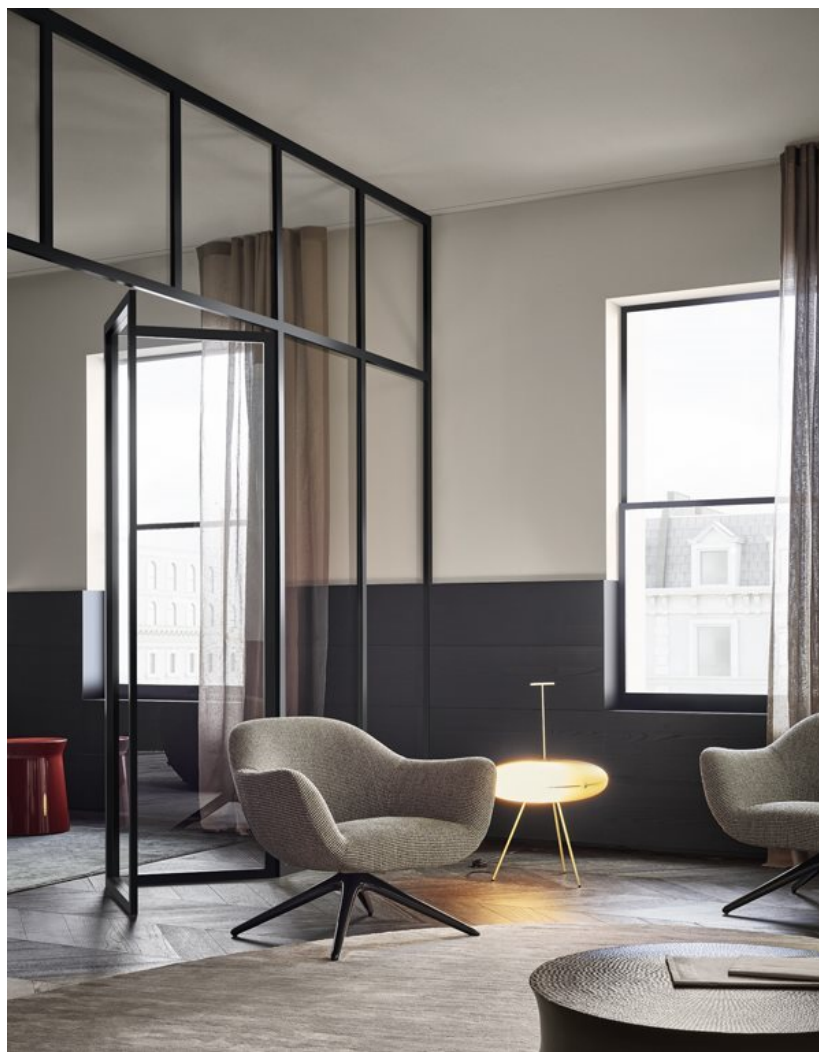


MAD CHAIR

MARCEL WANDERS (2014)



DESCRIPTION

Marcel Wanders's Mad Chair has an harmonic structure creating strong suggestions: the ideal of a design without any material boundaries of great impact.

Poliform

MAD CHAIR

MARCEL WANDERS (2014)



TECHNICAL DESCRIPTION

TPOLOGY

armchair

STRUCTURE

flexible moulded polyurethane

PRE-COVER

polyester padding

COVER

stretched, removable in fabric and not removable in leather

LEGS

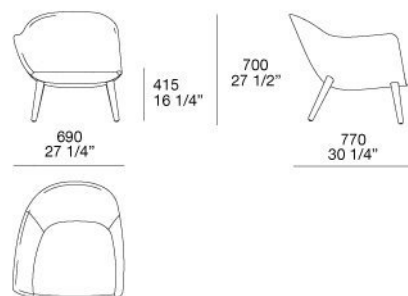
solid wood - painted metal

Poliform

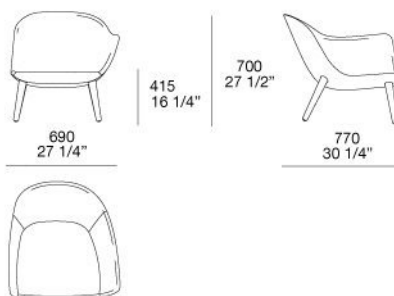
MAD CHAIR

MARCEL WANDERS (2014)

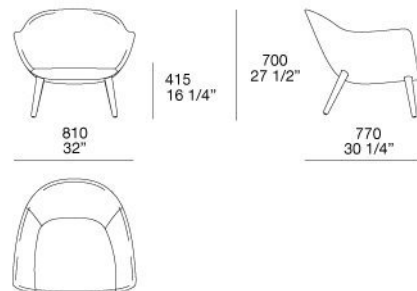
MAPL690X



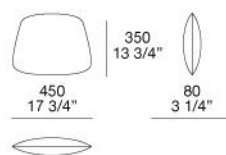
MAPL690Z



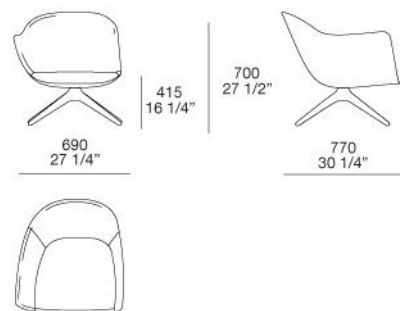
MAPL770N



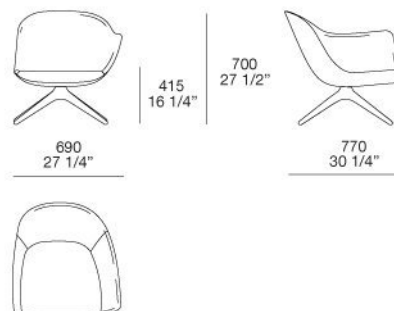
MAPR



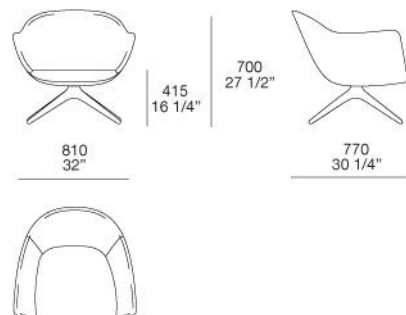
MAPN690X



MAPN690Z



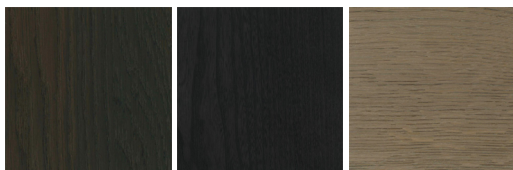
MAPN810



Poliform

MAD CHAIR

FINISHINGS\LEGS\WOODS (3)



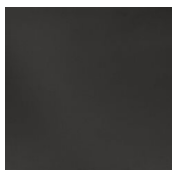
SPESSART
OAK

BLACK ELM

CENERE OAK

MAD CHAIR

FINISHINGS\SWIVEL BASE\ BROWN NICKEL MAT PAINTED (1)



BROWN
NICKEL MAT
PAINTED

MAD CHAIR

FINISHINGS\SWIVEL BASE\GLOSSY PAINTEDBROWN NICKEL (1)



GLOSSY
PAINTEDBRO
WN NICKEL

MAD CHAIR

FINISHINGS\COVER\FABRIC (35)



KUSHIRO

SENDAI

NAYORO

KITAMI

CHIOS

ARGO

CORINTO

ITACA



MILOS

OLIMPIA

PAROS

ZANTE

SPARTA

SALFORD

ORLEANS

OXFORD



PERSIA

RABAT

MERIDA

HANNOVER

CORDOBA

CALEDONIA

NORWAY

ASPEN



ATLANTA

BERLINO

KYOTO

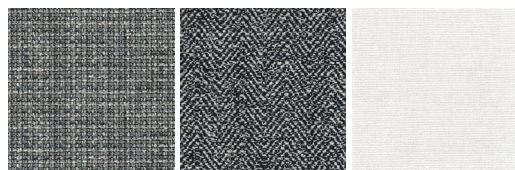
LIMA

MELBOURNE

PORTO

SIVIGLIA

INDRA



LIPSI

SKYROS

NAXOS

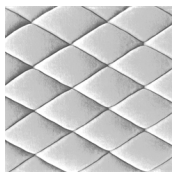
MAD CHAIR

FINISHINGS\COVER\LEATHER (8)

							
NABUK LEATHER	VINTAGE LEATHER	SUPER LEATHER	PELLE SPECIAL	AGED- LOOKING LEATHER	COLORS LEATHER	SPRING LEATHER	SOFT LEATHER

MAD CHAIR

FINISHINGS\COVER\GIBSON (1)


GIBSON