

# SOORI HIGHLINE

SOO CHAN (2014)



## DESCRIPTION

This is a restyled interpretation of familiar shapes from the collective imagination, with a strong contemporary feel. Soori Highline, Soo Chan design, is a discretely elegant armchair with slender distinguishing features imbued with extreme comfort.

**Poliform**

# SOORI HIGHLINE

SOO CHAN (2014)



## TECHNICAL DESCRIPTION

### TPOLOGY

armchair

### STRUCTURE

solid wood

### SEAT/BACKREST PADDING

multi-density polyurethane foam and feathers

### PRE-COVER

cotton canvas

### FINAL STRETCHED COVERING

seat cushion and backrest cushion not removable in fabric - leather - armrests and padded backrest not removable in fabric - leather

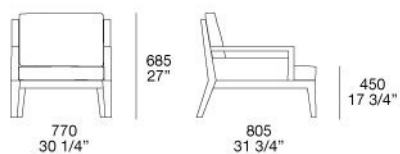
### STITCHING

traditional stitching; grosgrain, sample colours as per sample book

# SOORI HIGHLINE

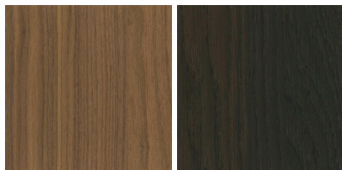
SOO CHAN (2014)

**SRPL660**



# SOORI HIGHLINE

FINISHINGS\STRUCTURE\WOODS (2)



WALNUT-C

SPESSART  
OAK

# SOORI HIGHLINE

FINISHINGS\SEAT AND BACKREST CUSHION\FABRIC (35)



KUSHIRO

SENDAI

NAYORO

KITAMI

CHIOS

ARGO

CORINTO

ITACA



MILOS

OLIMPIA

PAROS

ZANTE

SPARTA

SALFORD

ORLEANS

OXFORD



PERSIA

RABAT

MERIDA

HANNOVER

CORDOBA

CALEDONIA

NORWAY

ASPEN





ATLANTA

BERLINO

KYOTO

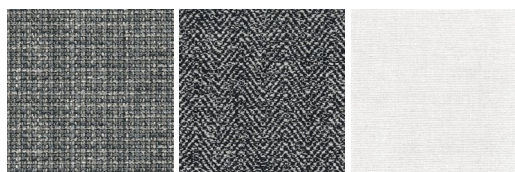
LIMA

MELBOURNE

PORTO

SIVIGLIA

INDRA



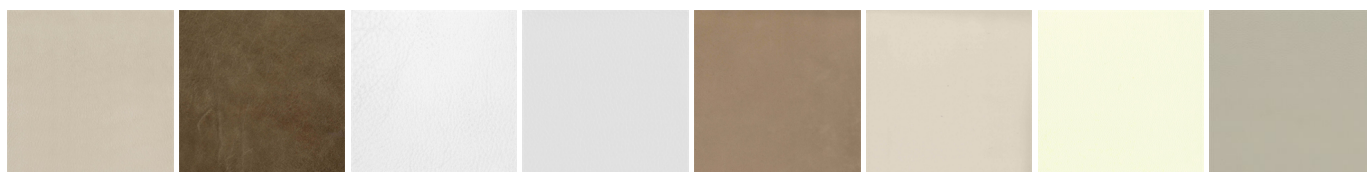
LIPSI

SKYROS

NAXOS

## SOORI HIGHLINE

FINISHINGS\SEAT AND BACKREST CUSHION\LEATHER (8)



NABUK  
LEATHER

VINTAGE  
LEATHER

SUPER  
LEATHER

PELLE  
SPECIAL

AGED-  
LOOKING  
LEATHER

COLORS  
LEATHER

SPRING  
LEATHER

SOFT  
LEATHER

## SOORI HIGHLINE

FINISHINGS\STITCHES\TRIMS (8)



36 BURRO

41 NERO

42 ACCIAIO

45 PERLA

50 SAHARA

85 RUBINO

117 NAVY

141  
TEMPESTA