

BIG BUG

PAOLA NAVONE (2009)



DESCRIPTION

Big Bug, the extralarge version of Bug armchair design by Paola Navone. A landscape of comfort in which the seat and arm create highly original geometries.

Poliform

BIG BUG

PAOLA NAVONE (2009)



TECHNICAL DESCRIPTION

TPOLOGY

armchair

STRUCTURE

wood and by-products

PADDING SEAT/BACKREST

multi-density polyurethane foam

PRE-COVER

polyester padding

BASE

feet in plastic

COVER

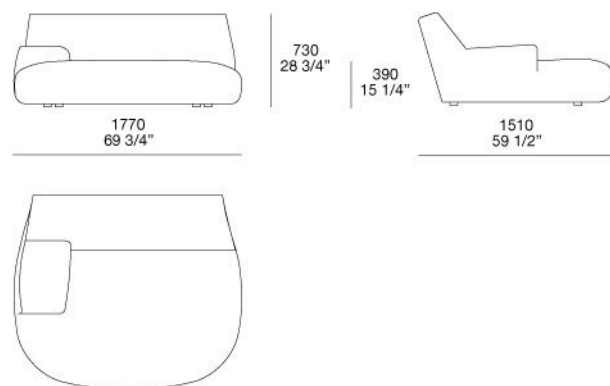
removable in fabric, not removable in leather

Poliform

BIG BUG

PAOLA NAVONE (2009)

BUPL177S
BUPL177D



BIG BUG

FINISHINGS\ARMCHAIR\FABRIC (35)



KUSHIRO

SENDAI

NAYORO

KITAMI

CHIOS

ARGO

CORINTO

ITACA



MILOS

OLIMPIA

PAROS

ZANTE

SPARTA

SALFORD

ORLEANS

OXFORD



PERSIA

RABAT

MERIDA

HANNOVER

CORDOBA

CALEDONIA

NORWAY

ASPEN



ATLANTA

BERLINO

KYOTO

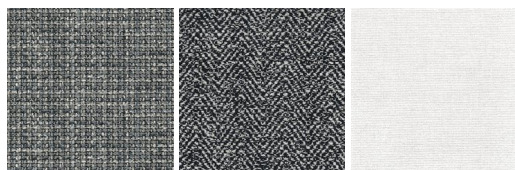
LIMA

MELBOURNE

PORTO

SIVIGLIA

INDRA



LIPSI

SKYROS

NAXOS

BIG BUG

FINISHINGS\ARMCHAIR\LEATHER (8)

							
NABUK LEATHER	VINTAGE LEATHER	SUPER LEATHER	PELLE SPECIAL	AGED- LOOKING LEATHER	COLORS LEATHER	SPRING LEATHER	SOFT LEATHER