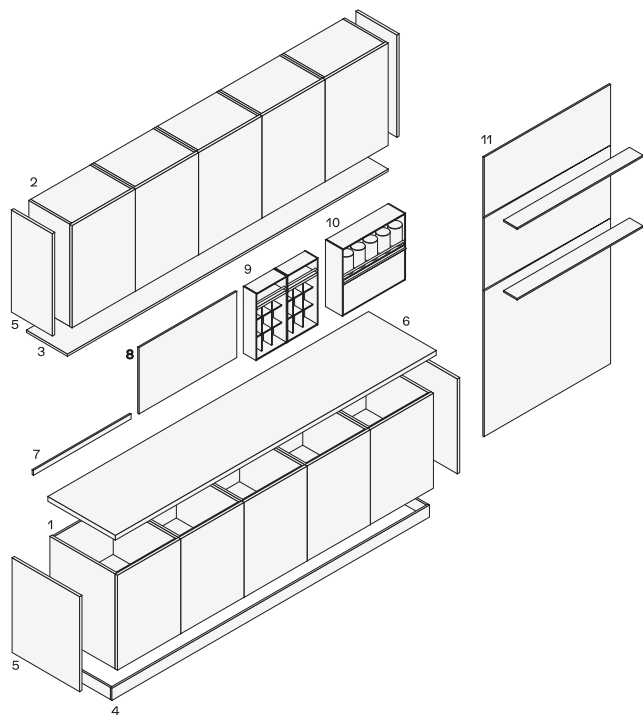




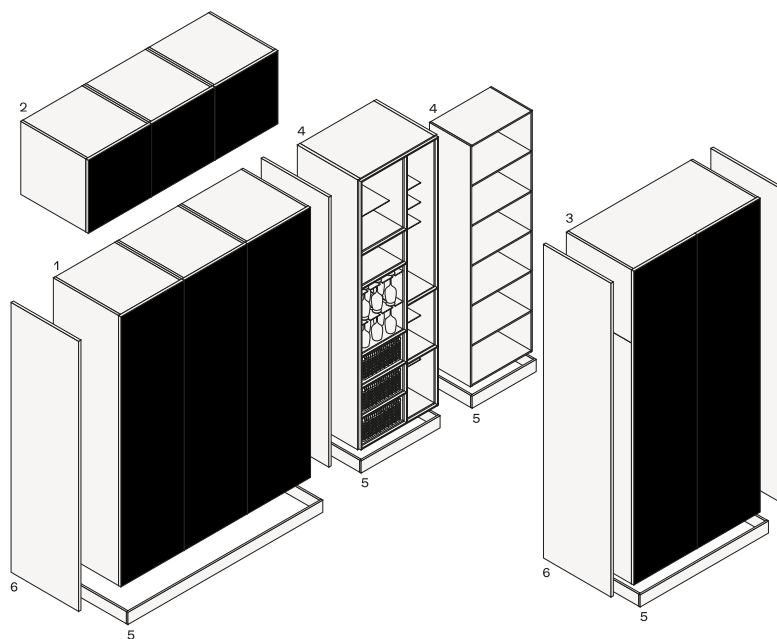
DESCRIPTION

Typology	Kitchen
Door thickness	26 mm - 1"
Top thickness	6-12-20-30-40-52 mm
Base units opening type	With built-in handle
Tall units opening type	With integrated handle
Wall units opening type	Profile
Upper elements for tall unit opening type	With handle tip-on

COMPONENTS



- 1 Base units
- 2 Wall units
- 3 Panel under wall unit, linear elements
- 4 Plinths, linear elements
- 5 Finishing sides, complementary elements
- 6 Tops, linear elements
- 7 Backsplashes, linear elements
- 8 Back panels, linear elements
- 9 Shaker, accessorized backs, linear elements
- 10 Deep Shaker, accessorized backs, linear elements
- 11 Wall panelling and shelves, linear elements



- 1 Tall units
- 2 Cabinets above tall unit
- 3 High tall units
- 4 Open elements
- 5 Plinths, linear elements
- 6 Finishing sides, complementary elements

DOORS



Door thickness
26 mm opening edge with molding and integrated side handle

FINISHES

SHOWCASES



PR19 Thickness 26 mm - 1"

Door in bronzed reflecting glass 5051 with frame in bronzo painted aluminium. For wall units with opening with lower profile or tip-on opening.

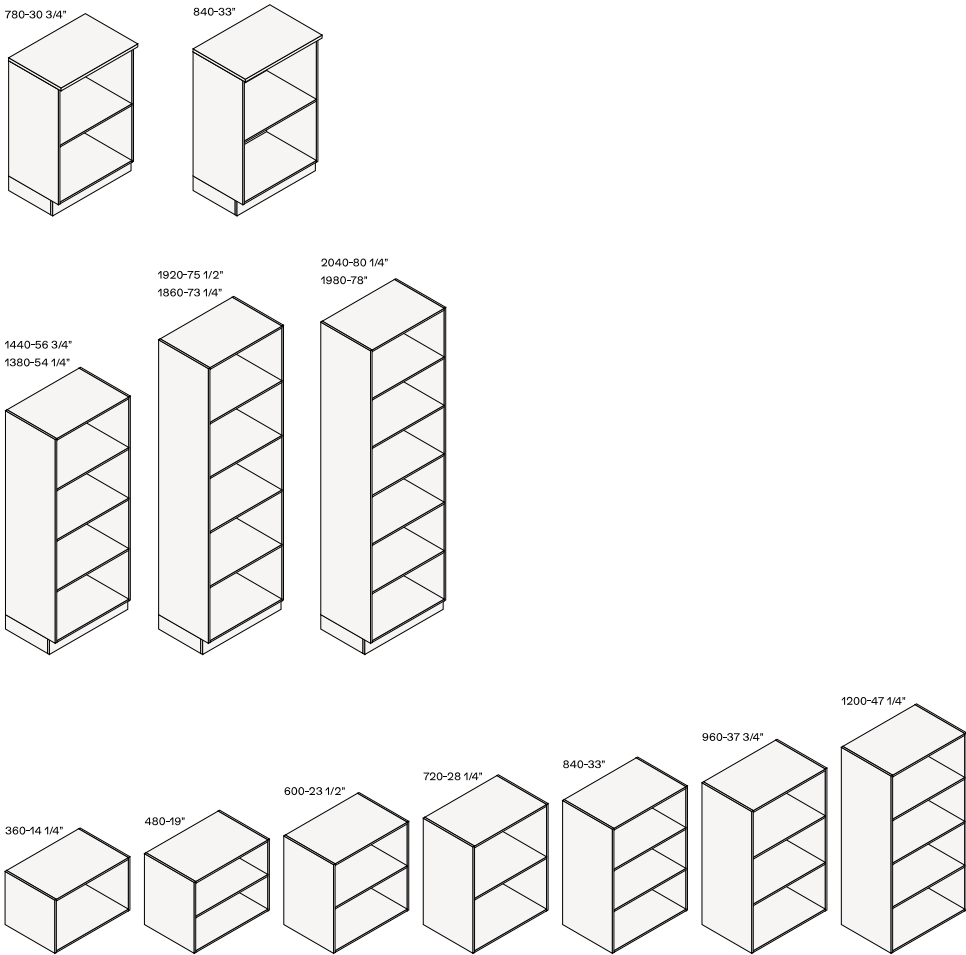


PR21 Thickness 26 mm - 1"

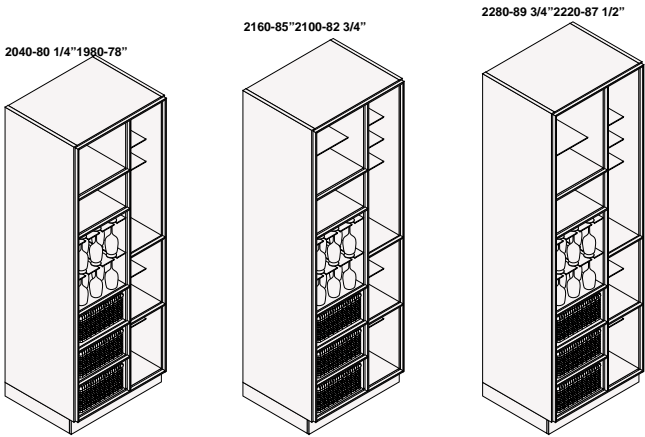
Door in fumé reflecting glass 5059 with moka anodized aluminium frame. For wall units with opening with lower profile. For tall units with opening moka painted integrated handle. For elements above tall unit with tip-on opening.

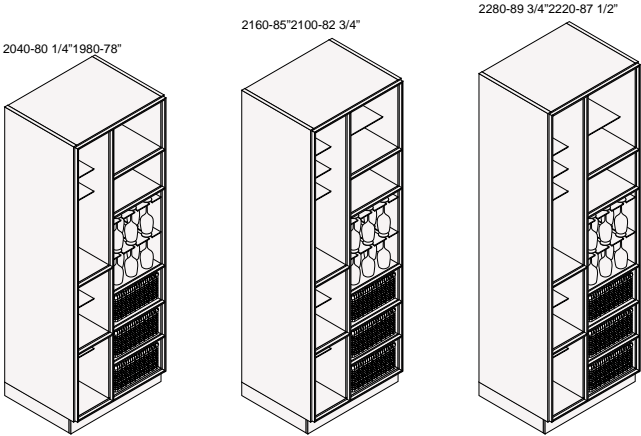
OPEN ELEMENTS

Thickness 12 mm - 1/2"

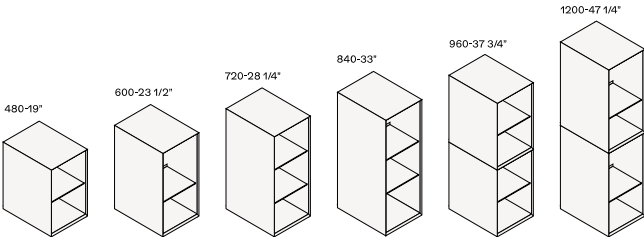
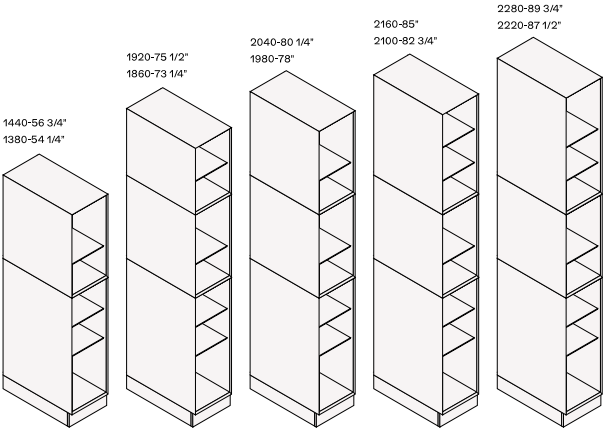
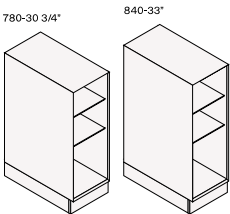


Thickness 26 mm - 1"



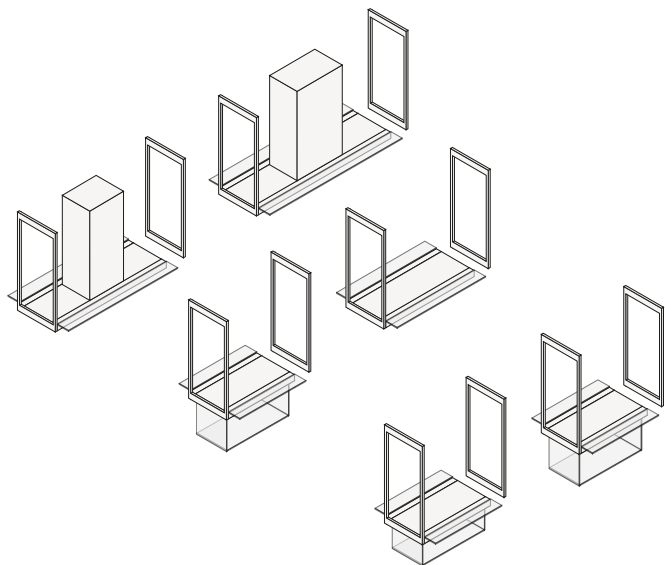


Thickness 26 mm Trail - 1"

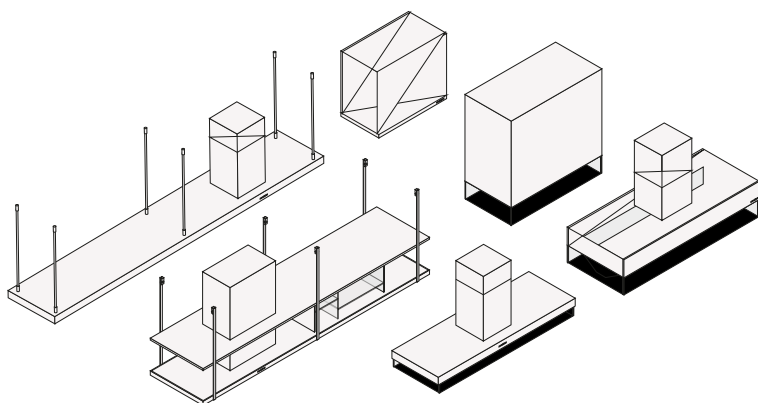


POLIFORM PERSONALISED HOODS

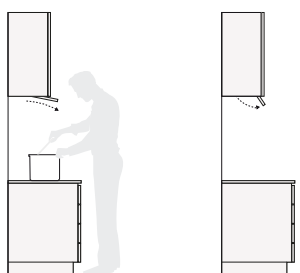
Infinity, modular system



Island and wall hoods

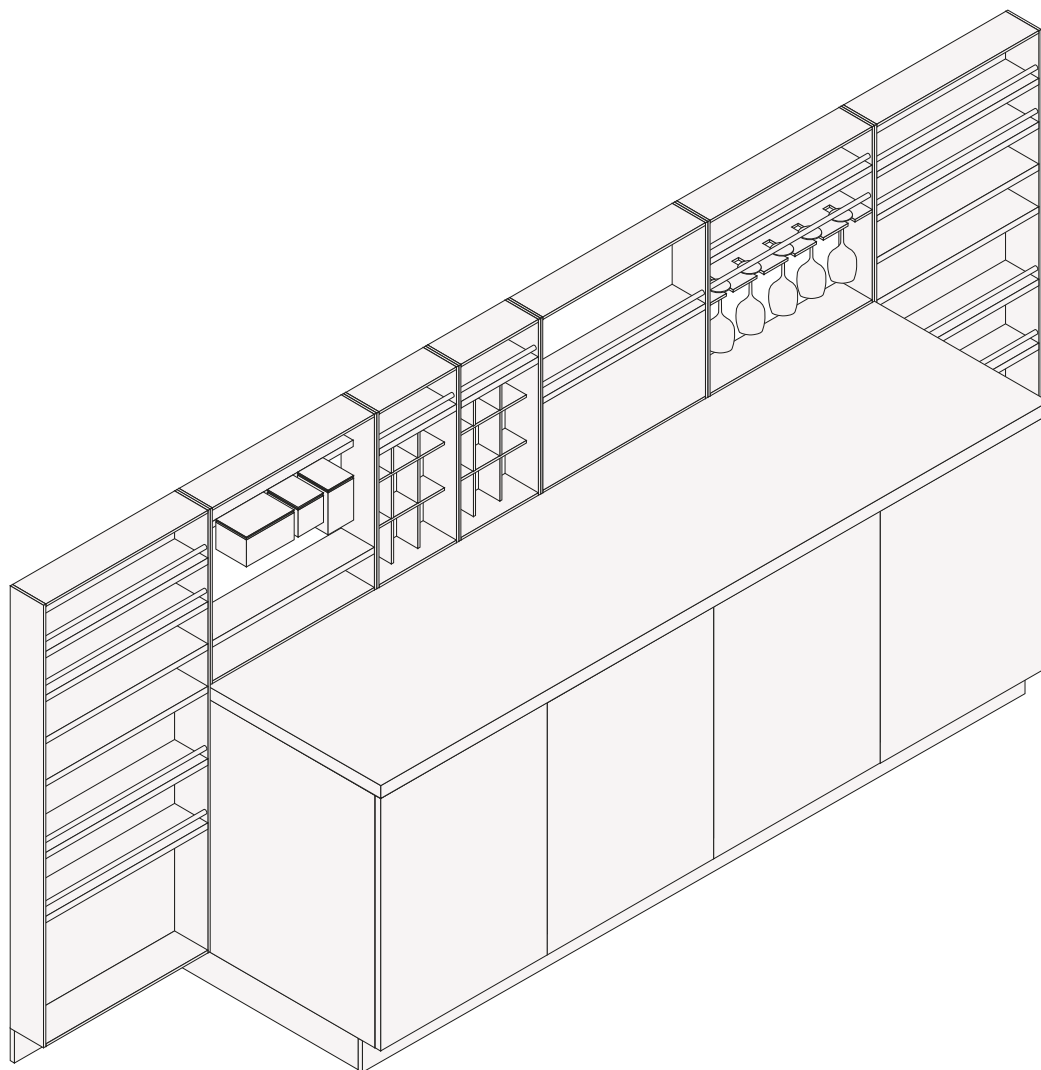


Integrated hoods

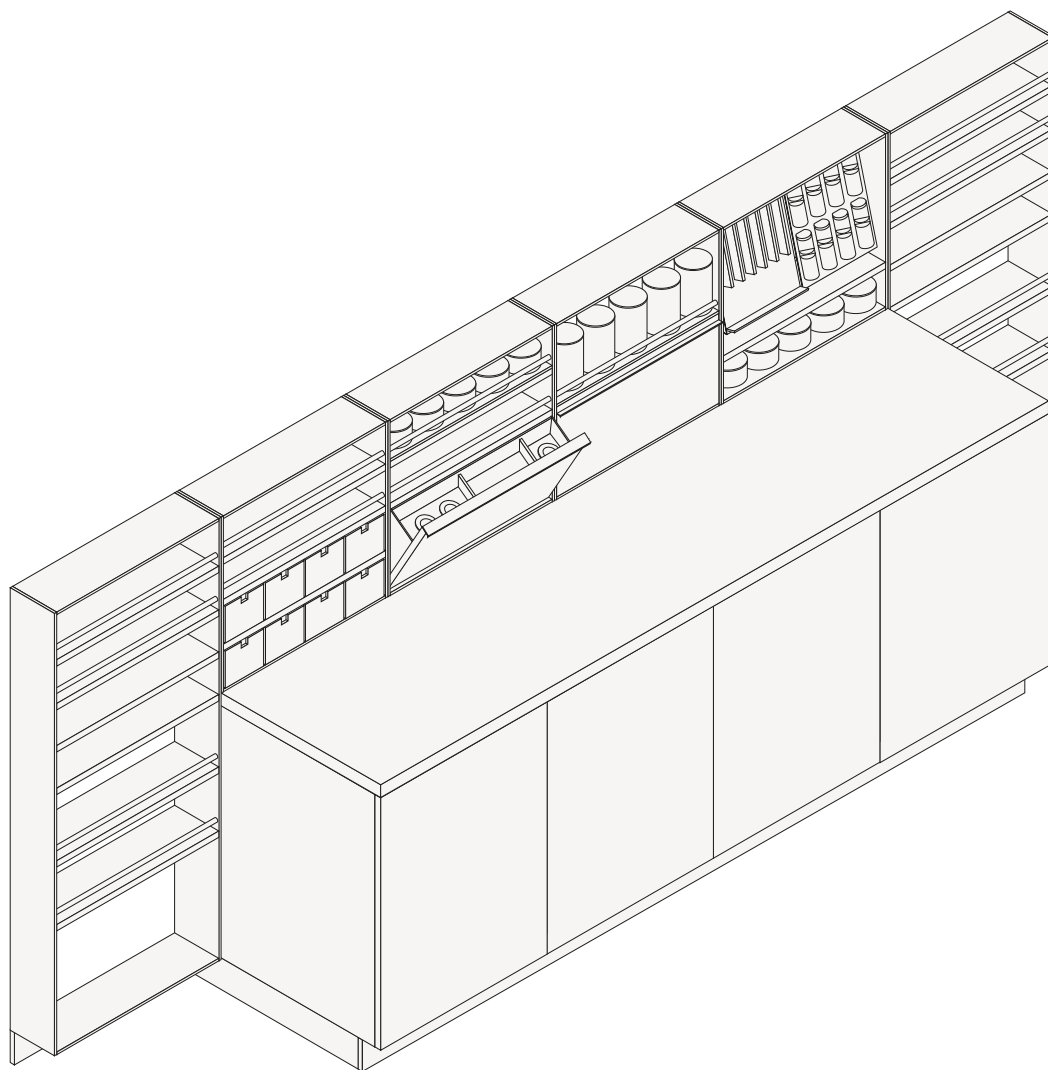


EQUIPPED BACKPANELS

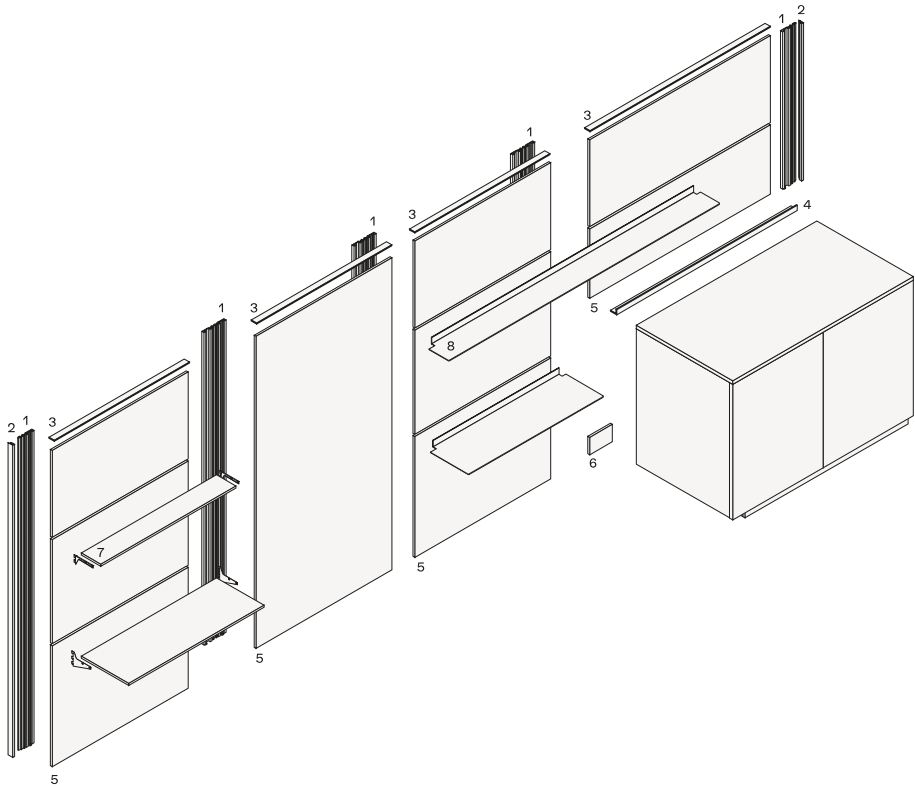
Shaker



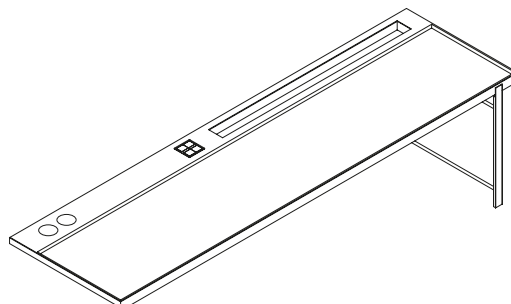
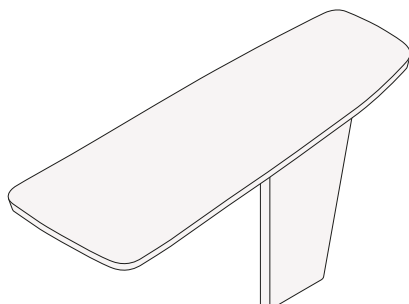
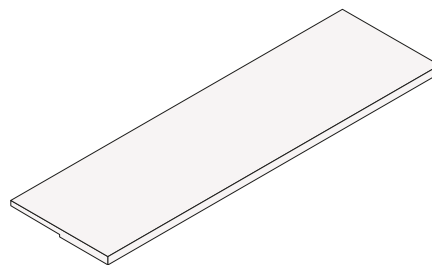
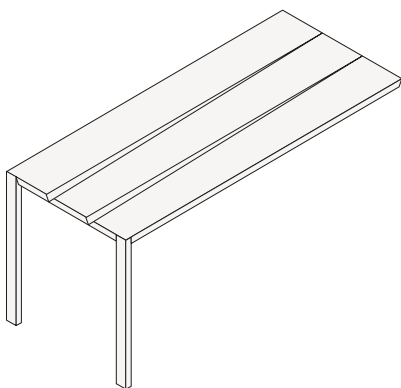
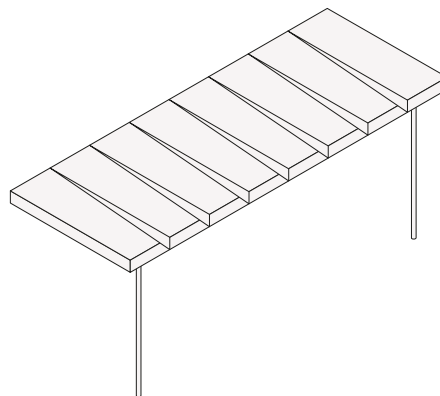
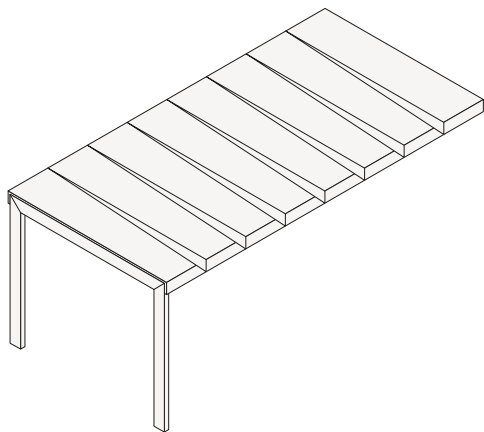
Deep Shaker

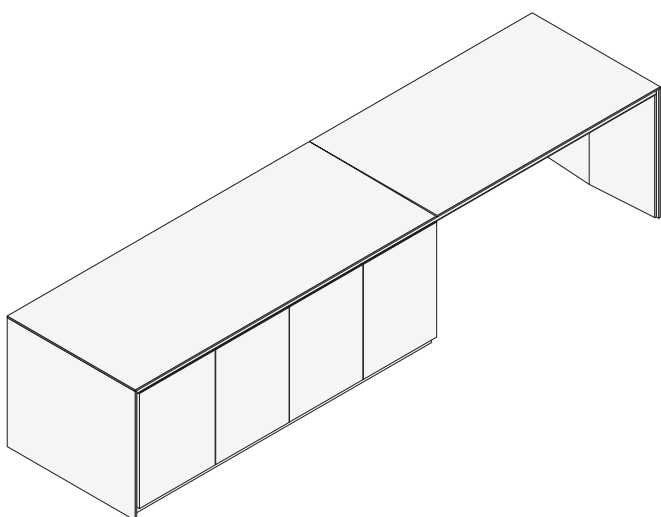
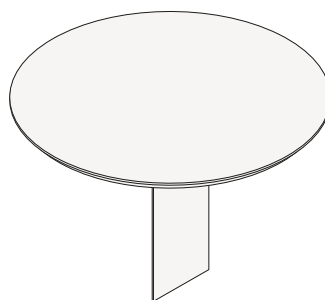
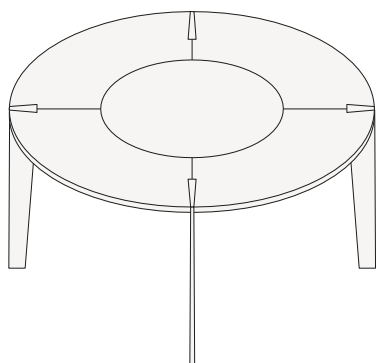


WALL PANELLING



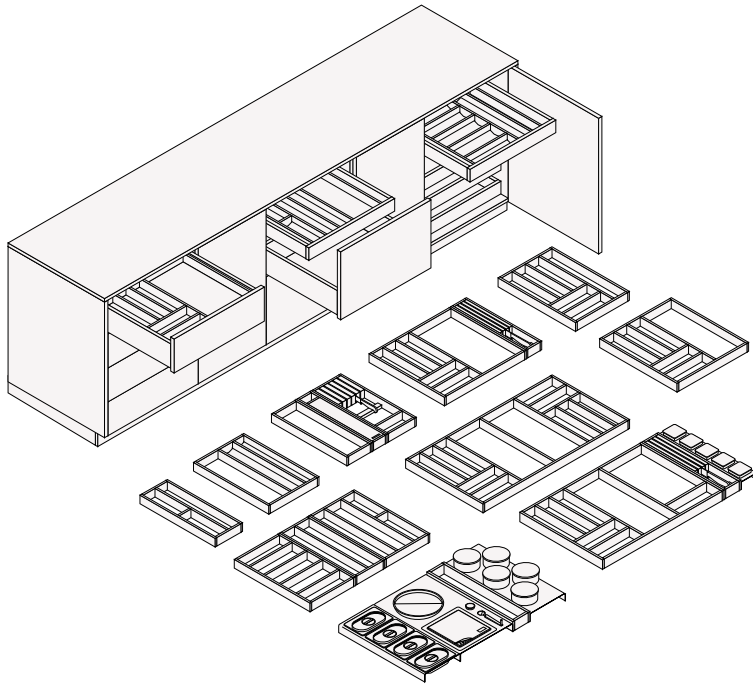
SNACK TOP



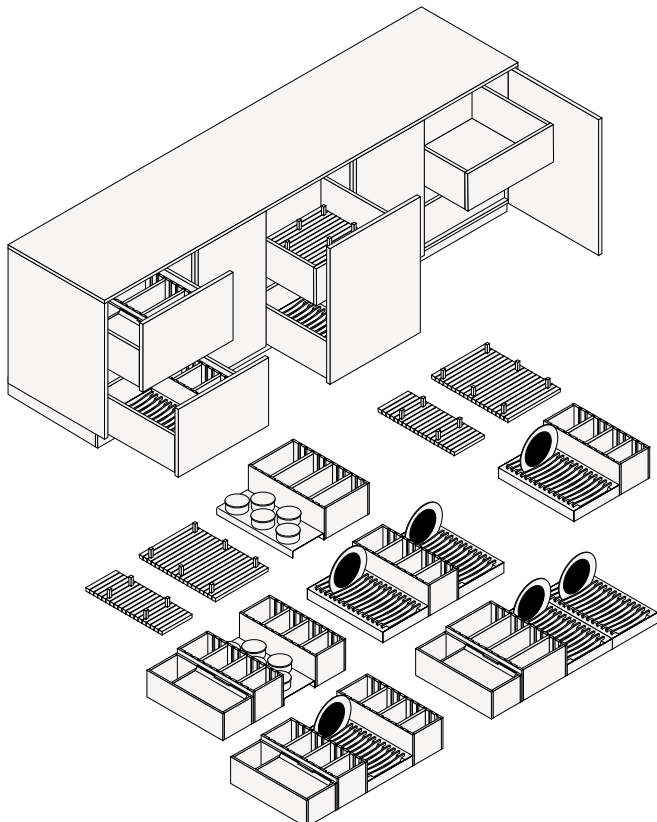


EQUIPMENT

Drawers equipments

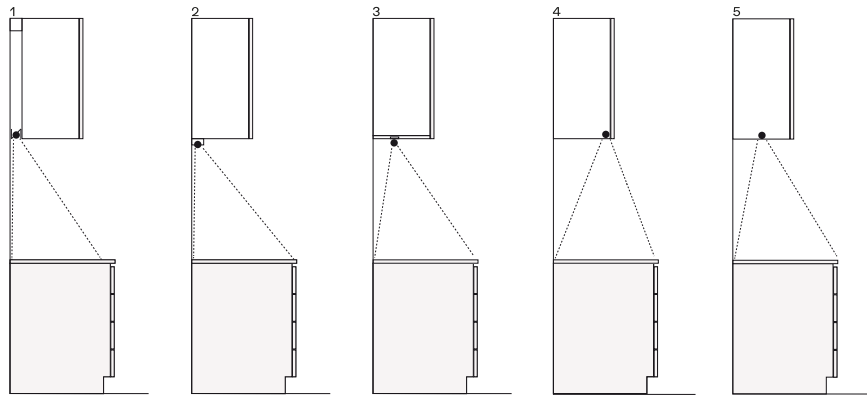


Pull-out baskets equipments

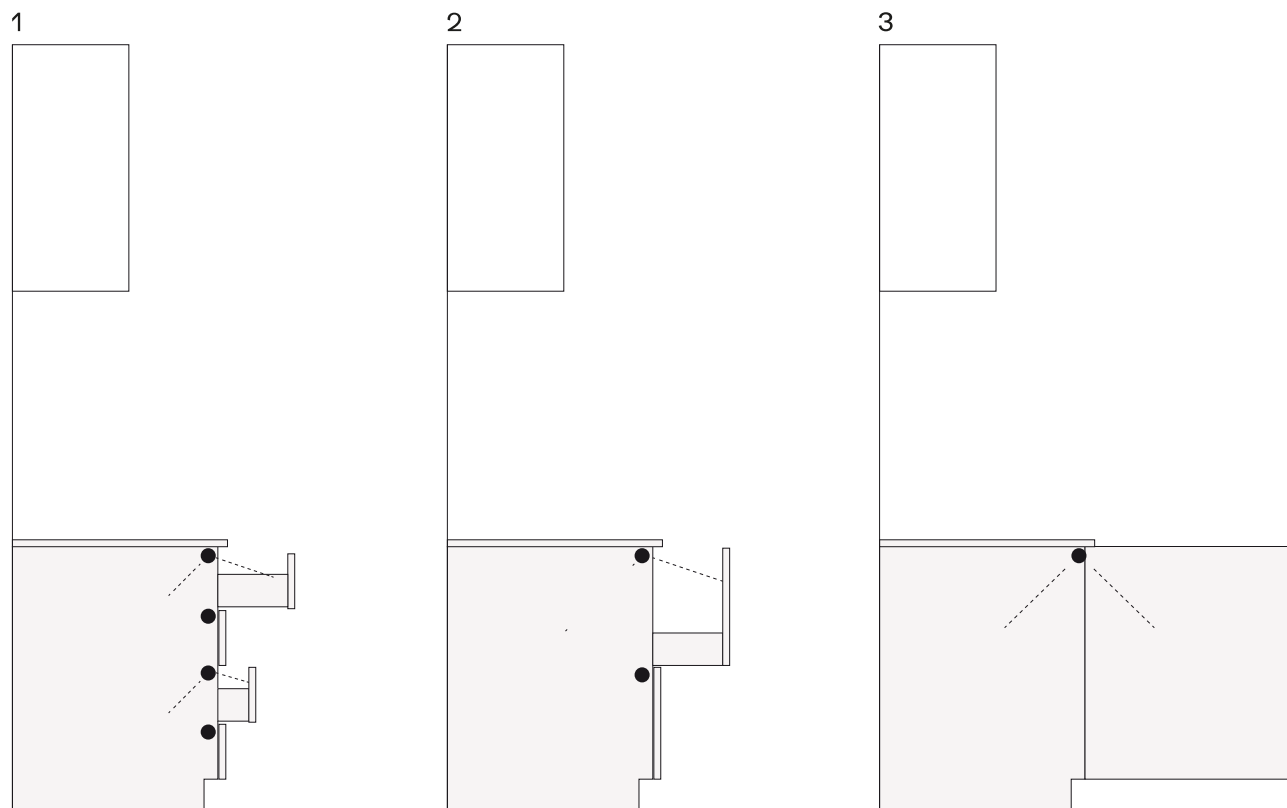


LIGHTING SOLUTIONS

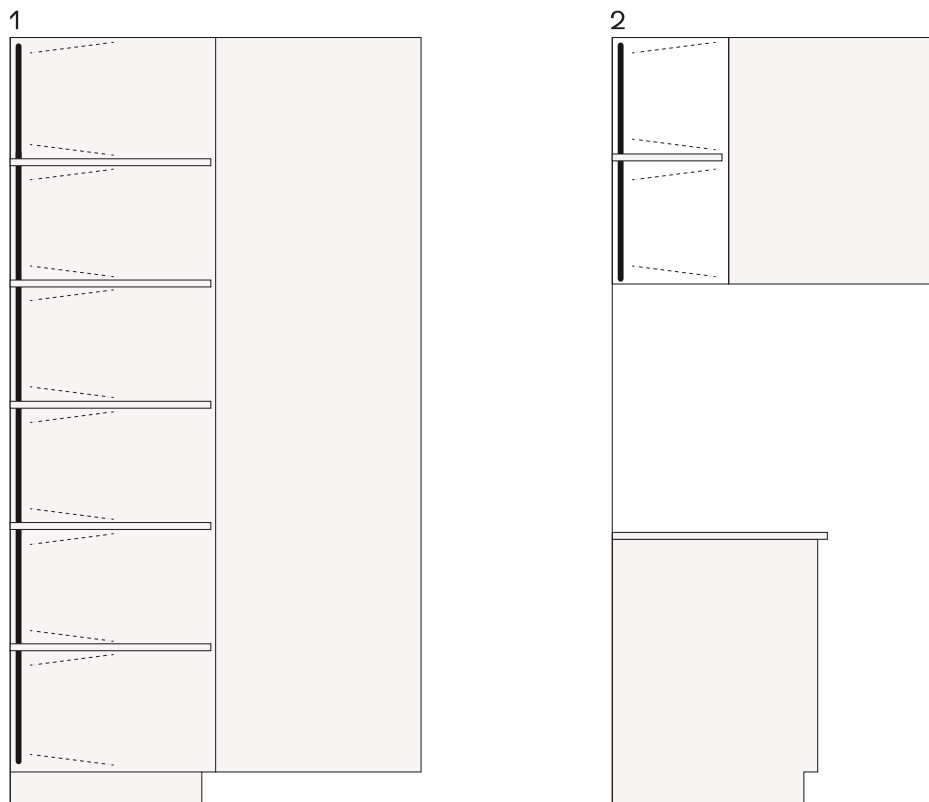
Worktops



Base



Tall and wall units



Equipped tall units

