



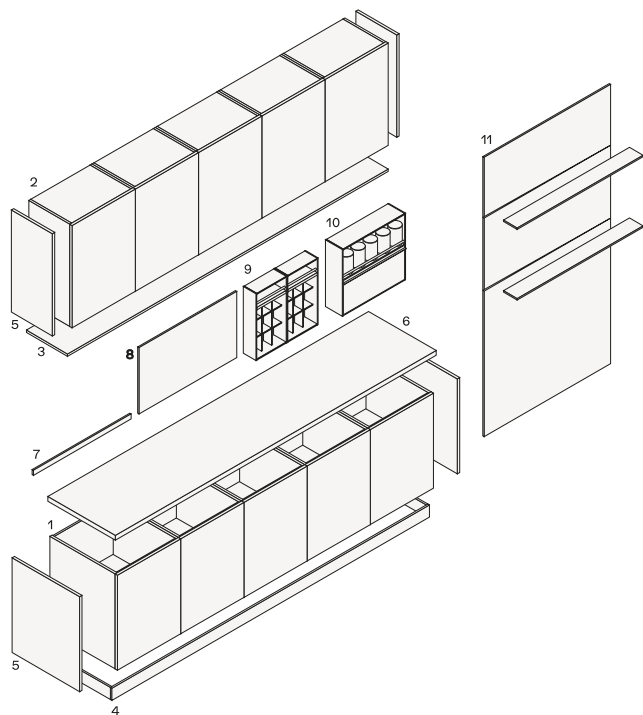
---

DESCRIPTION

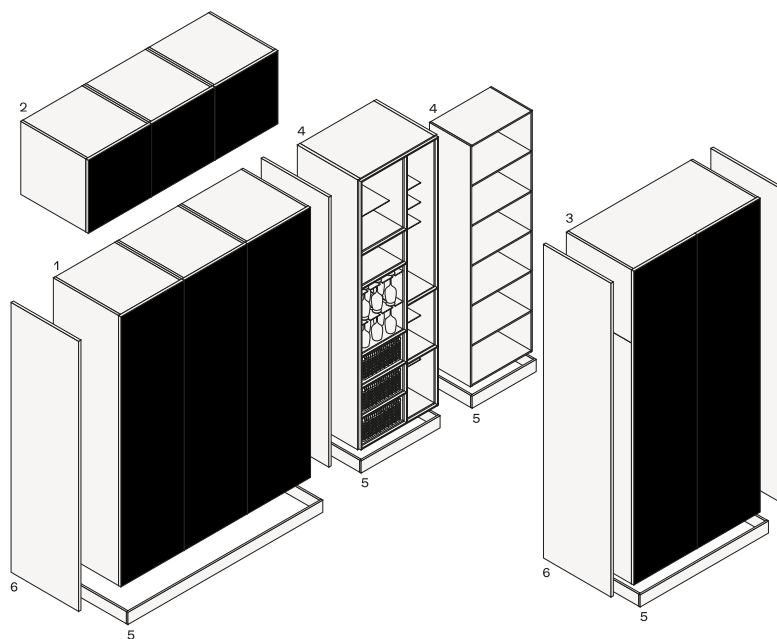
Typology	Kitchen
Door thickness	22 mm
Top thickness	12-20-30-40-52 mm
Base units opening type	With built-in handle
Tall units opening type	With profile and spacer
Wall units opening type	With finger-pull
Upper elements for tall unit opening type	With handle tip-on and spacer

## COMPONENTS

### Structure item



- 1 Basen
- 2 Schrankwände
- 3 Unterschranksblende, lineare Elemente
- 4 Steckdosen, lineare Elemente
- 5 Abschlussseiten, Ergänzungselemente
- 6 Ebenen, lineare Elemente
- 7 Backsplashes, lineare Elemente
- 8 Rückenlehnen, lineare Elemente
- 9 Shaker, ausgestattete Rückenlehnen, lineare Elemente
- 10 Deep Shaker, ausgestattete Rückenlehnen, lineare Elemente
- 11 Boiserie und Regale, lineare Elemente



- 1 colonne
- 2 elementi sopra la colonna
- 3 colonne alte
- 4 articoli al giorno
- 5 Battiscopa, elementi lineari
- 6 Fianchi di finitura, elementi aggiuntivi



---

## DOORS

### Structure item



Handle profile finishings anodized champagne.  
Door thickness 22 mm - 3/4". 55° chamfered opening edge.

---

## FINISHES

### Structure item

SHOWCASES

Structure item



PR24 spessore 24 mm



PR22 spessore 20 mm

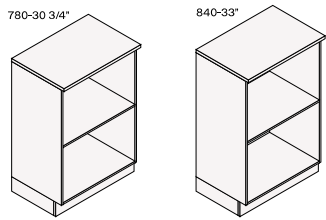
???? ? ? ??????????  
?????????? ???? 5059 ? ?????  
???? ? ? ????????????? ???????.

?? ??????? ????? ? ?????  
?????? ??????. ?? ?????,  
???????????? ? ????? ?????  
?? ? ? ????????? ?????,  
????????? ? ????? ???. ??  
?????????? ?????????,  
???????????? ? ????? ?????  
?? ??????????? ? ??????.

OPEN ELEMENTS

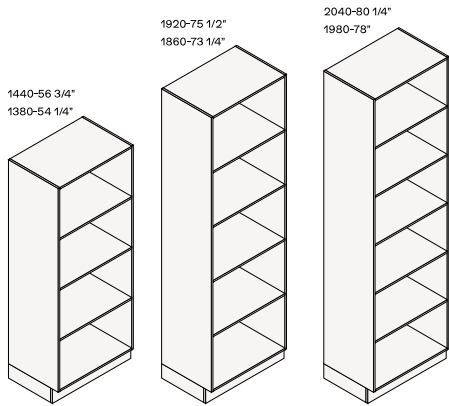
Thickness 12 mm - 1/2"

Basi pagina 410



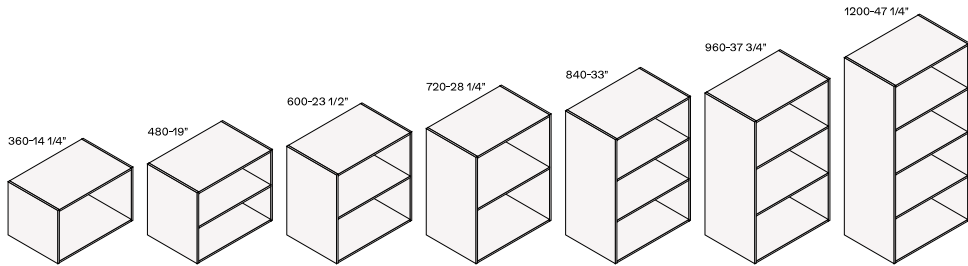
????? 150, 300, 450, 600

Colonne pagina 410



????? 150, 300, 450, 600

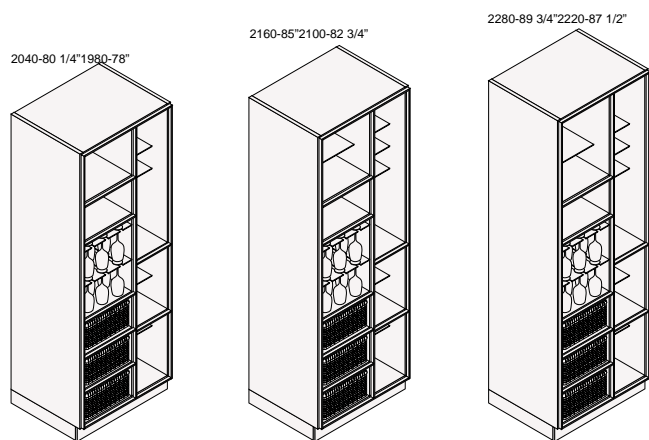
Armadi alti con 410



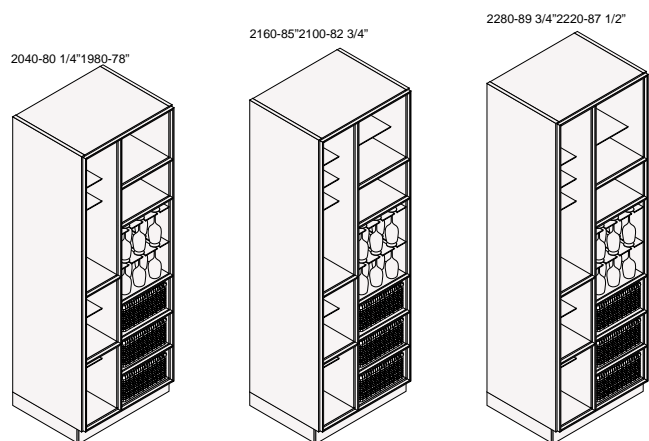
larghezza 150, 300, 450, 600; larghezza 606, 612, 622, 626 per livellare su basi con lato fine di 6, 12, 22, 26

Thickness 26 mm - 1"

## Colonna destra | 750 p 570

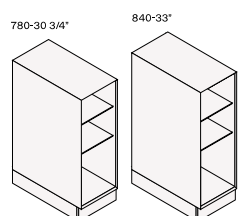


## Colonna sinistra | 750 p 570



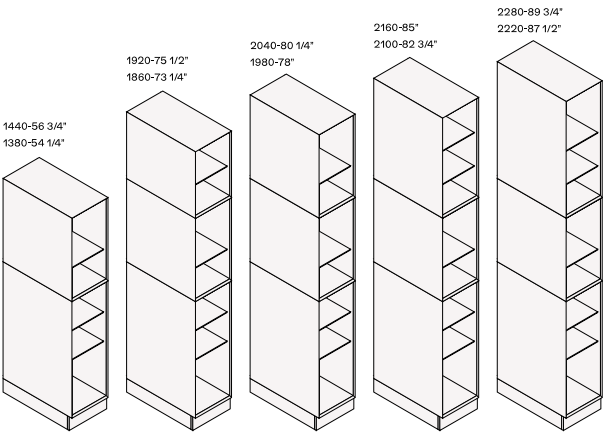
## Thickness 26 mm Trail - 1"

## Base | 300 p 570

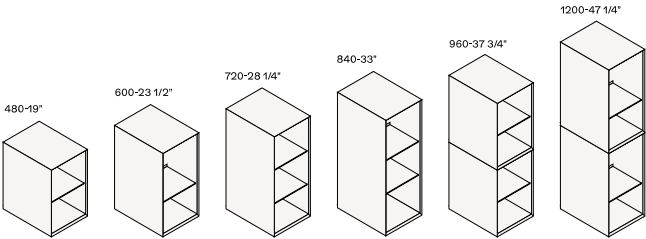




Colonne I 300 p 570

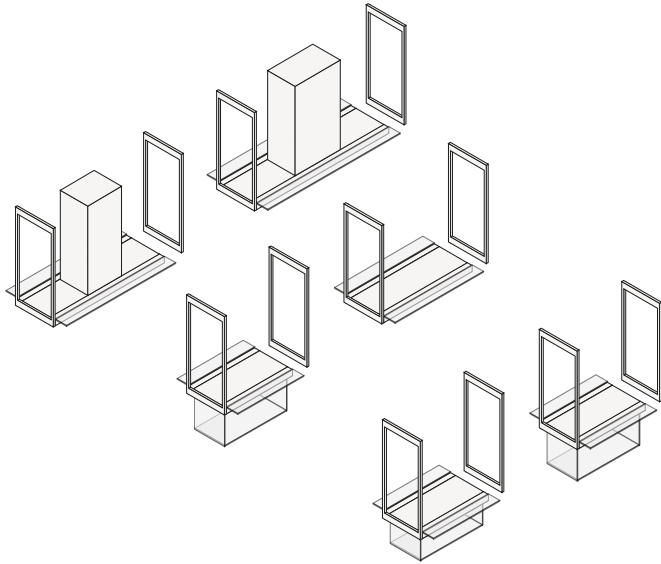


Pensili per 300 pagine 402

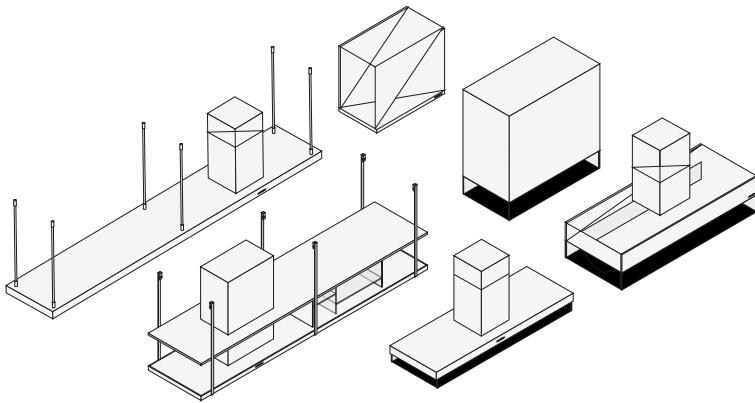


## POLIFORM PERSONALISED HOODS

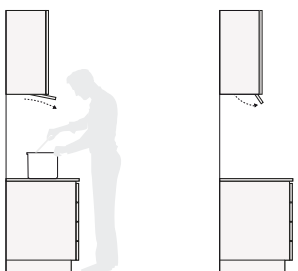
### Infinity, modular system



### Island and wall hoods



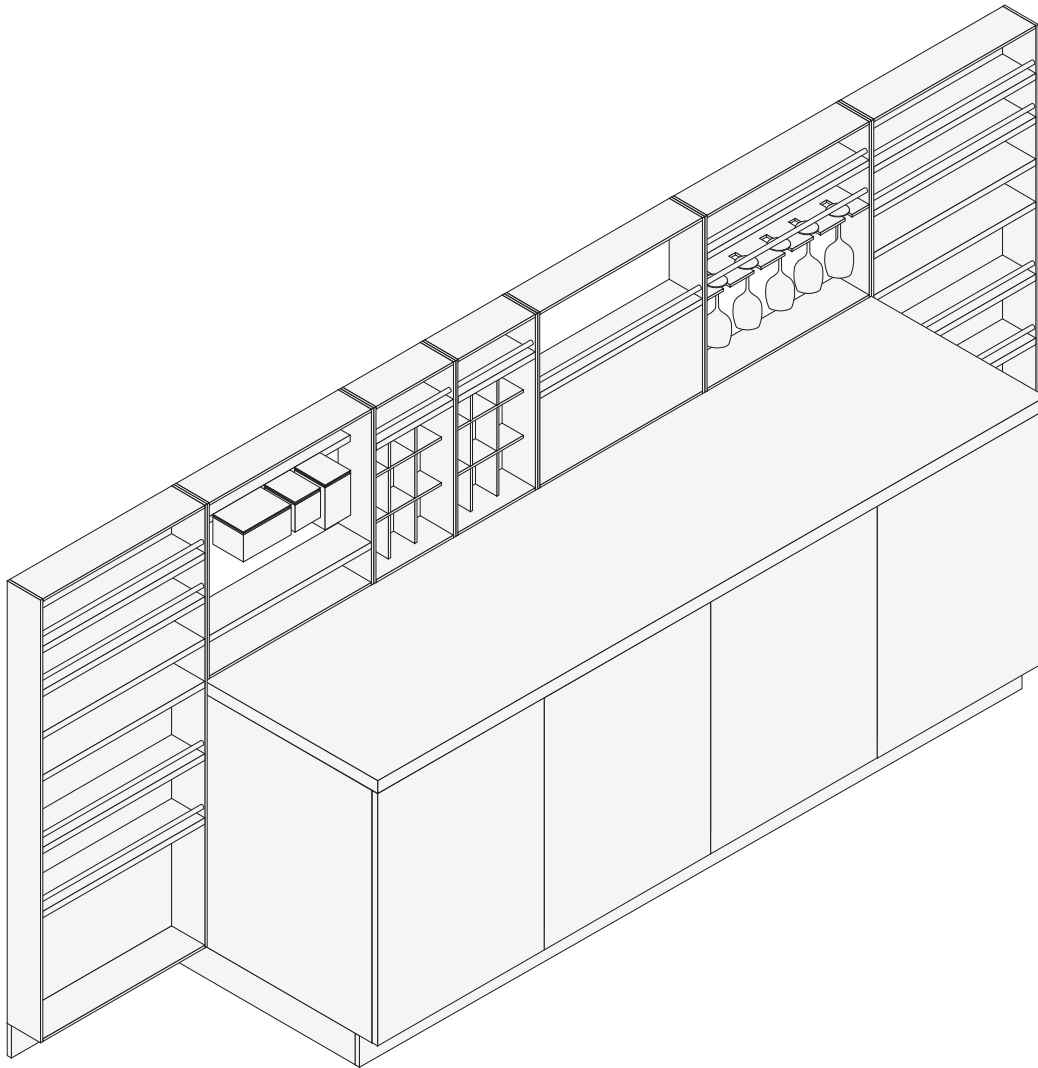
### Integrated hoods



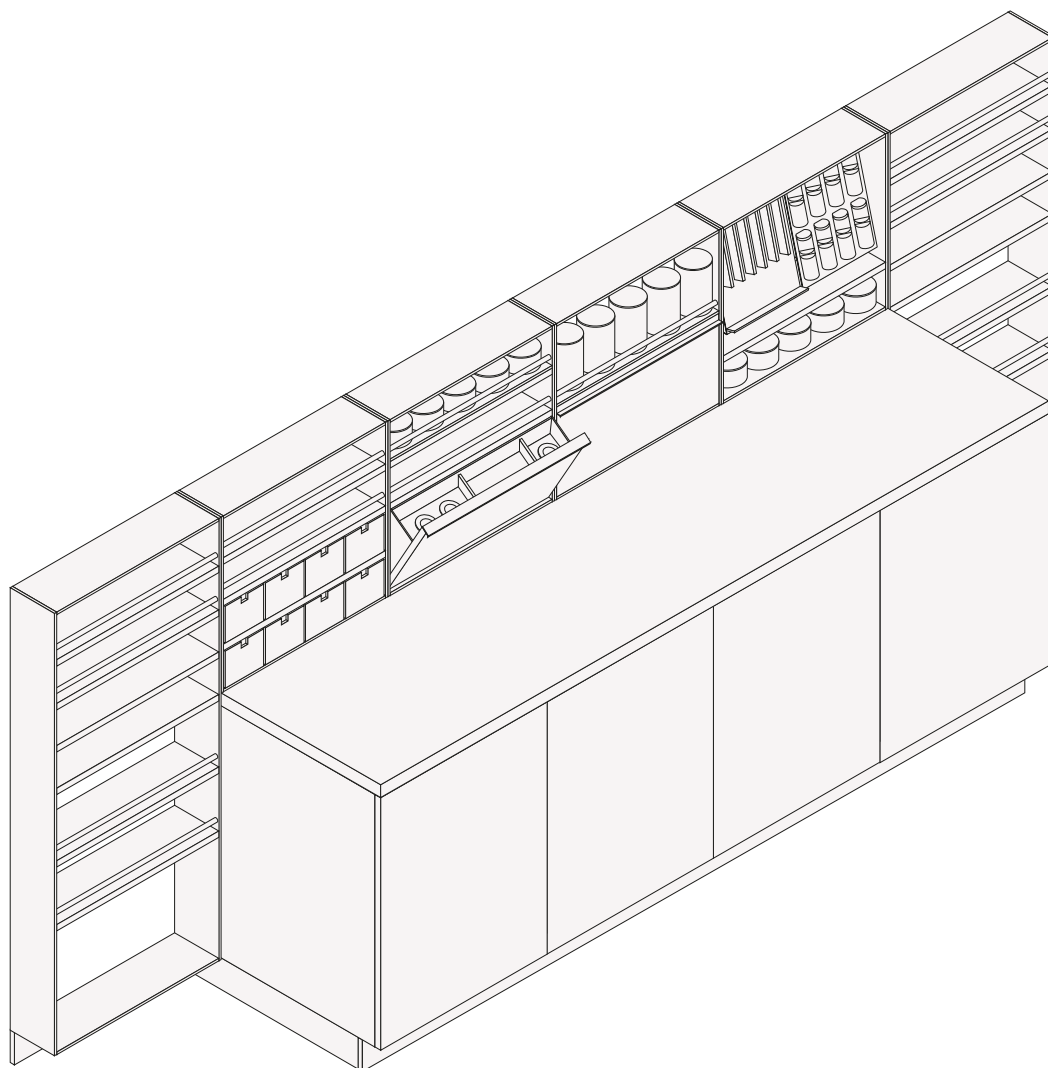
---

## EQUIPPED BACKPANELS

### Shaker

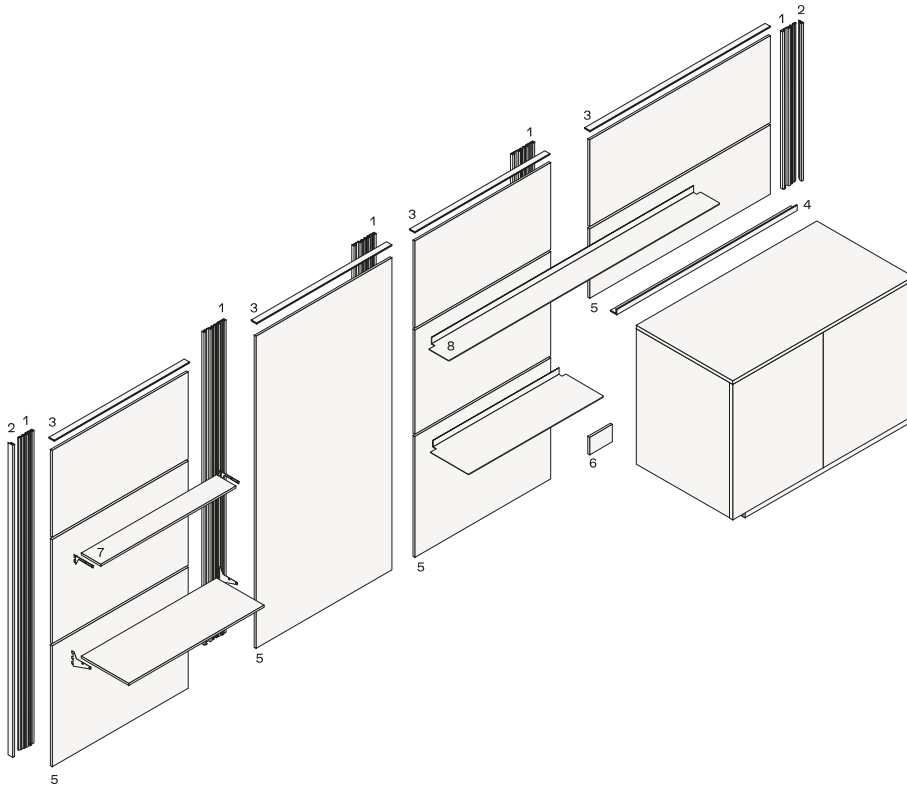


### Deep Shaker



## WALL PANELLING

### Structure item

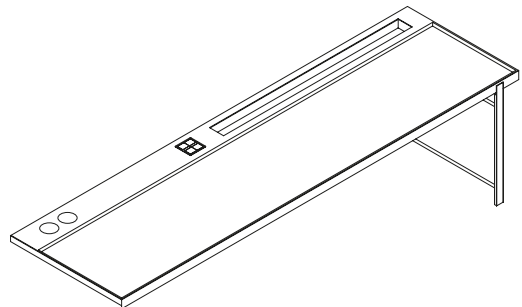
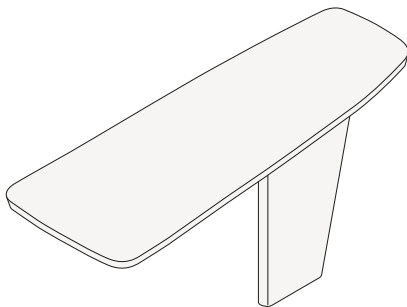
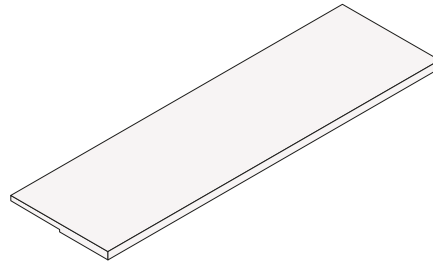
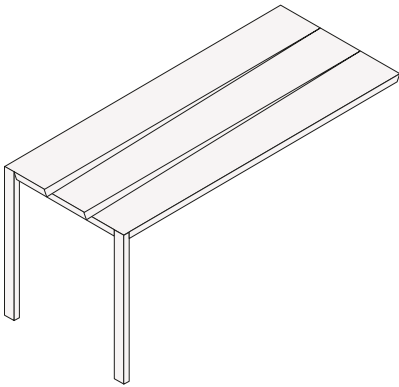
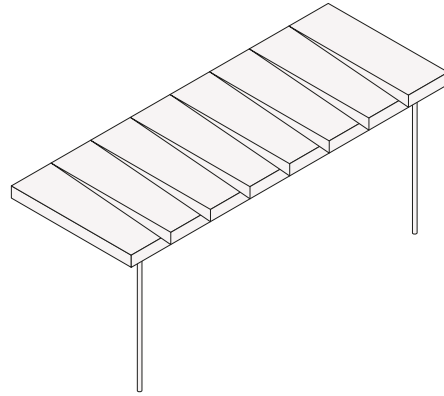
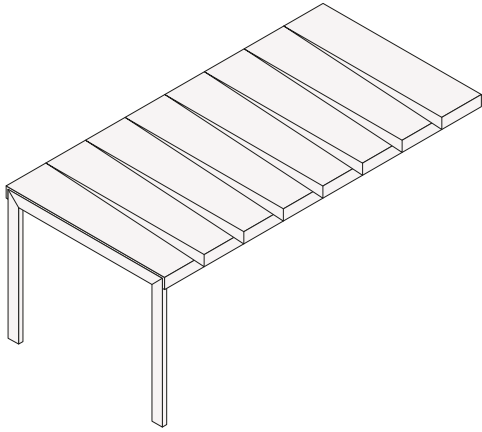


- 1 Supporto per montaggio a parete
- 2 Profilo laterale
- 3 Profilo superiore
- 4 Profilo angolare per sostenere la boiserie dall'alto
- 5 Boiserie
- 6 Copertura da 150 l per il riempimento del telaio di supporto dello zoccolo
- 7 Spessore ripiano 12
- 8 Spessore ripiano 3

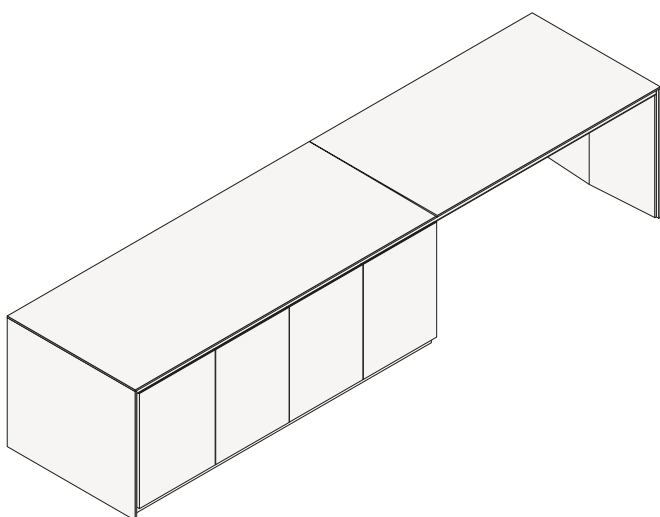
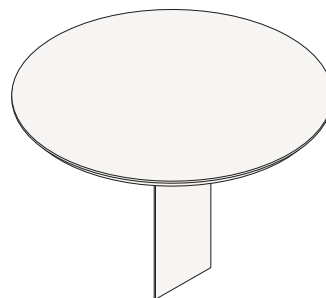
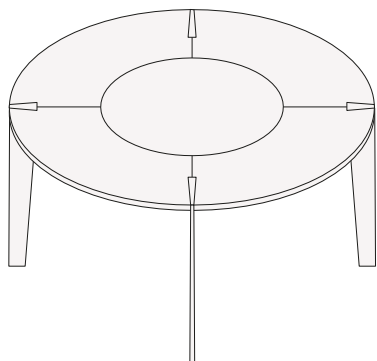
---

## SNACK TOP

### Structure item



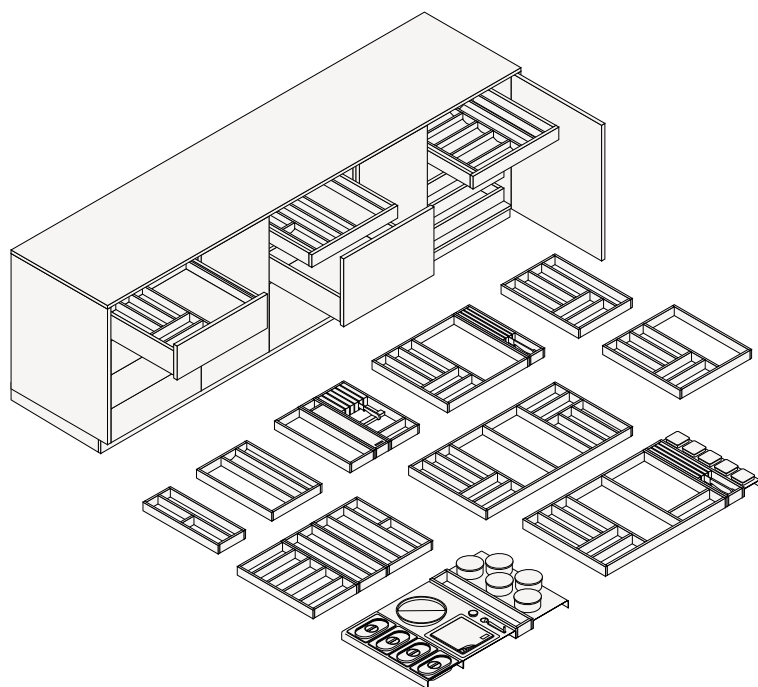




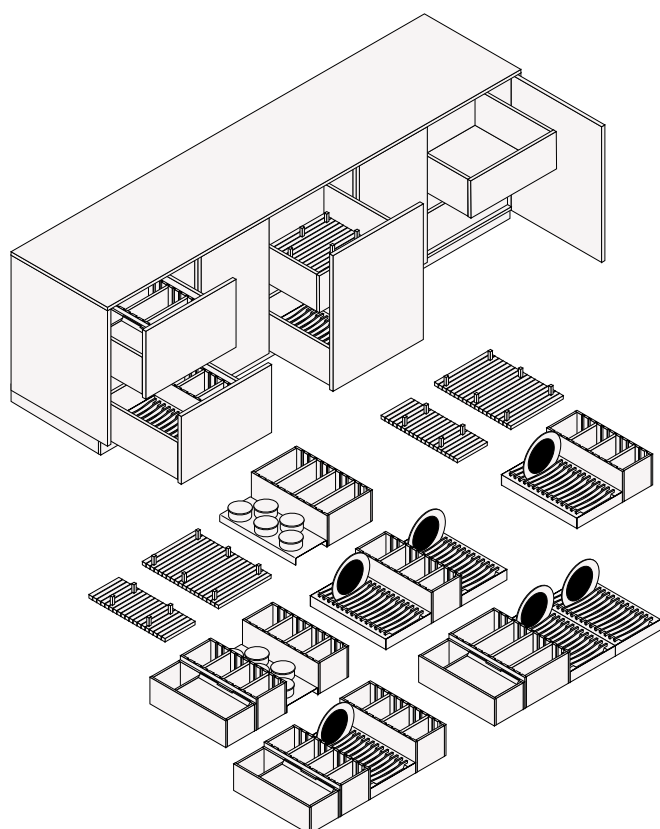
---

## EQUIPMENT

### Drawers equipments



### Pull-out baskets equipments

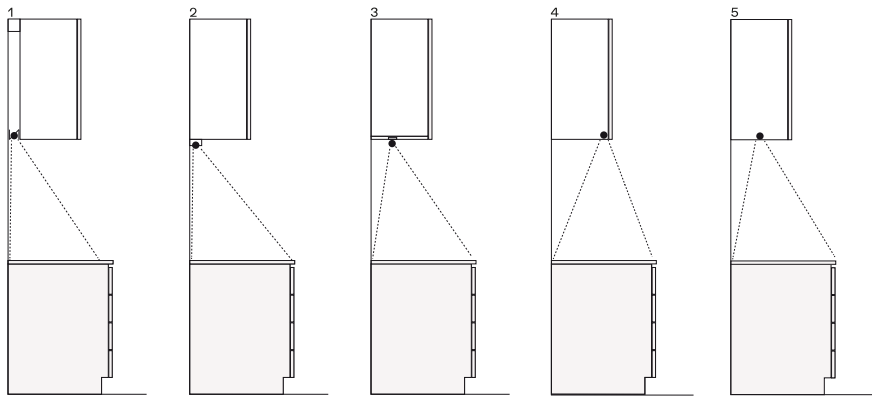




LIGHTING SOLUTIONS

Worktops

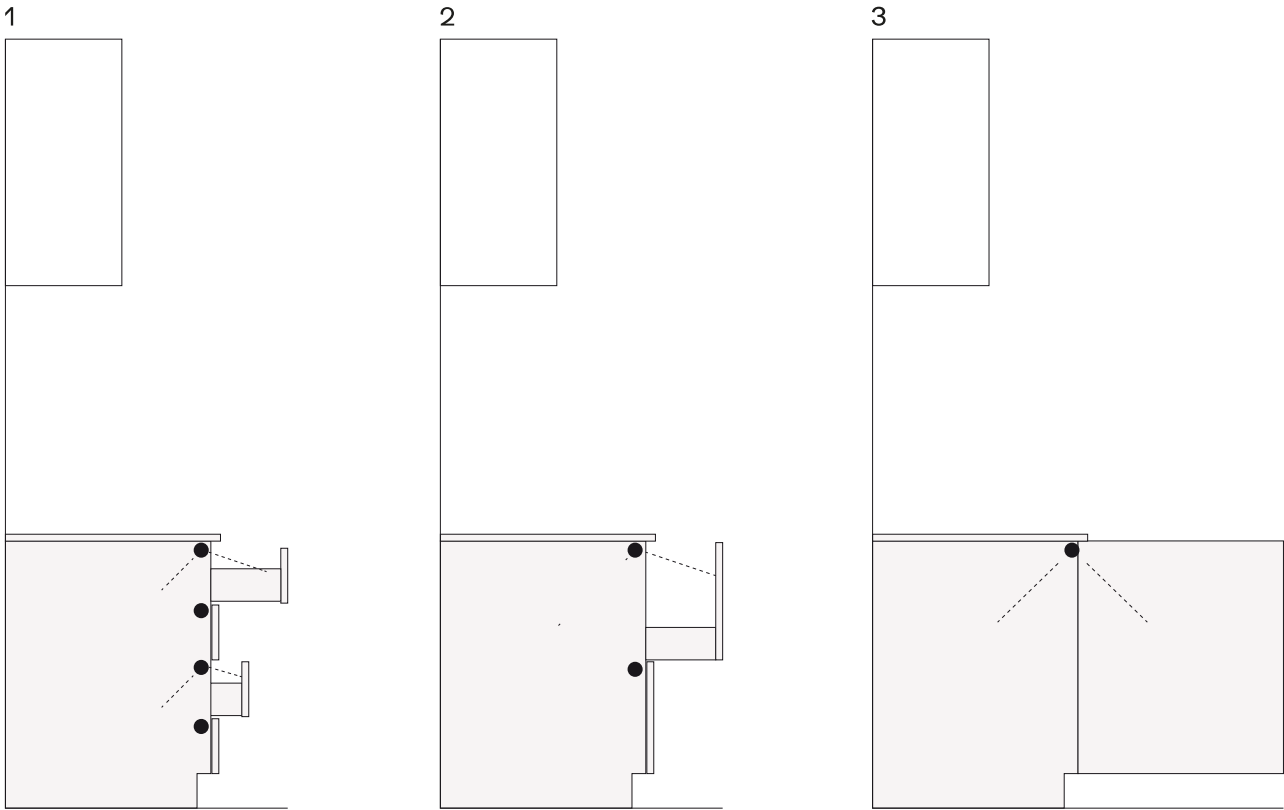
lampade a sospensione da esterno



- 1 ?????? ?????????? ?????????? ?? ?????????????, ????????? ? ????????????????????????????????? ?????????? ?????????? 100 ??
- 2 ??????? ??????? ??? ????????? ???????
- 3 ??????? ? ?????????????? ???????????????
- 4 ????????? ?????????? Multi-LED ??? ?????????? ??????? ??? ?????????? ??? ???????, ??????????????? ??????? ? ?????????? ??????? d 410
- 5 ?????????????? ???????????, ?????????????? ? ??????? ??????? ?????????????? ???????

Base

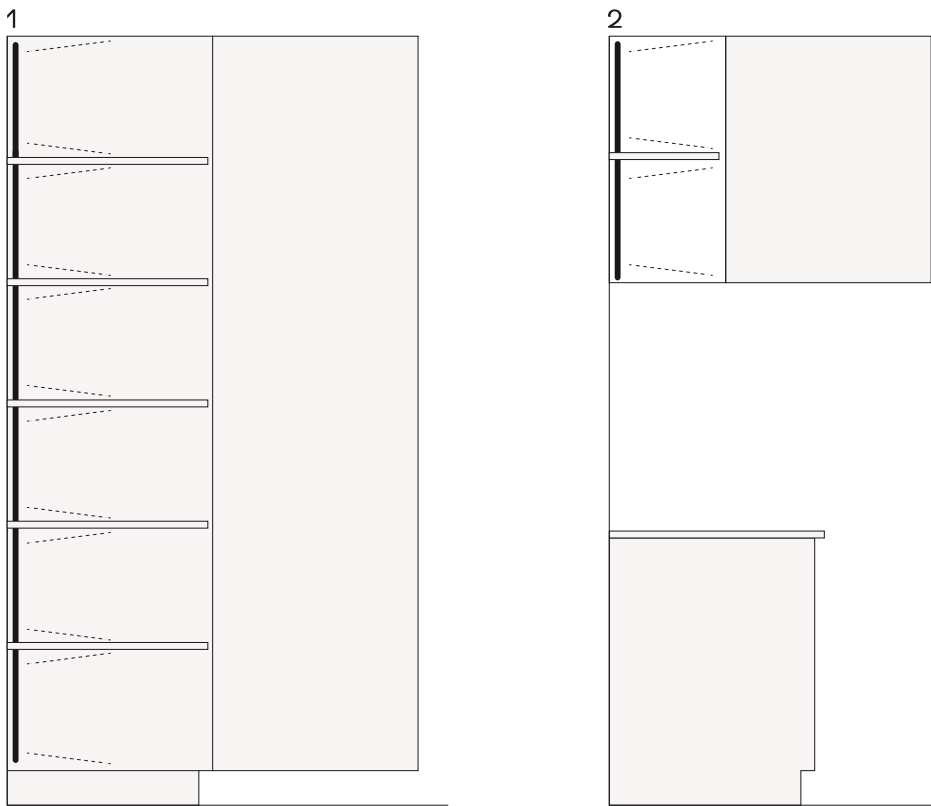
Illuminazione interna per basi



1 ????? ? ?????????????? ?????????????? Kiton  
2 ?????????????? ?????????????????????????? ??? Kiton  
3 ?????????? ????? ? ?????????????? ?????????????? Kiton

Tall and wall units

Apparecchi per interni per colonne e sospensioni

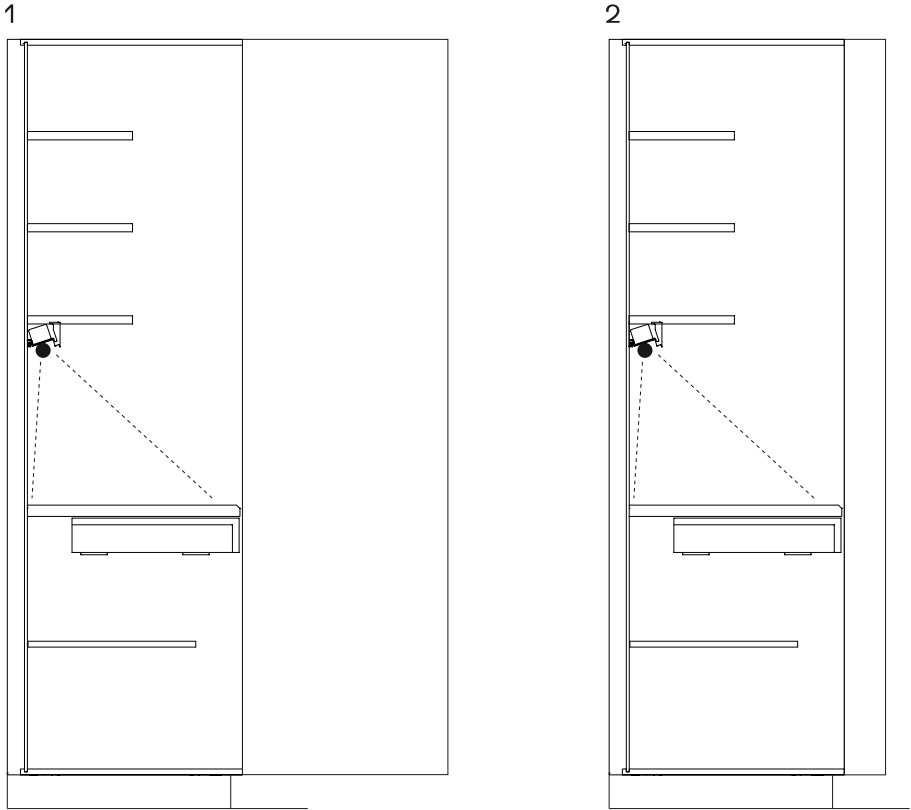


1 ?????? ? ???????????? ???????????? ??????????????, h ?? 1320 ?? 2280  
2 ???????? ????? ? ?????????????? ?????????????? ??????????????, h ?? 360 ?? 1200

Equipped tall units



Illuminazione interna per colonne attrezzate



1 ?????? ? ????? ?????????? ? 900, 1200  
2 ?????? ?????? ? ?????? ? ?????????? ??????, 1380 ?.