



---

## 介绍

图书馆系统

胶合、镶贴和漆面刨花板

镶贴和漆面刨花板

镶贴、漆面或晶体刨花板

漆面和镶贴刨花板、漆面、哑光漆或镶贴铝

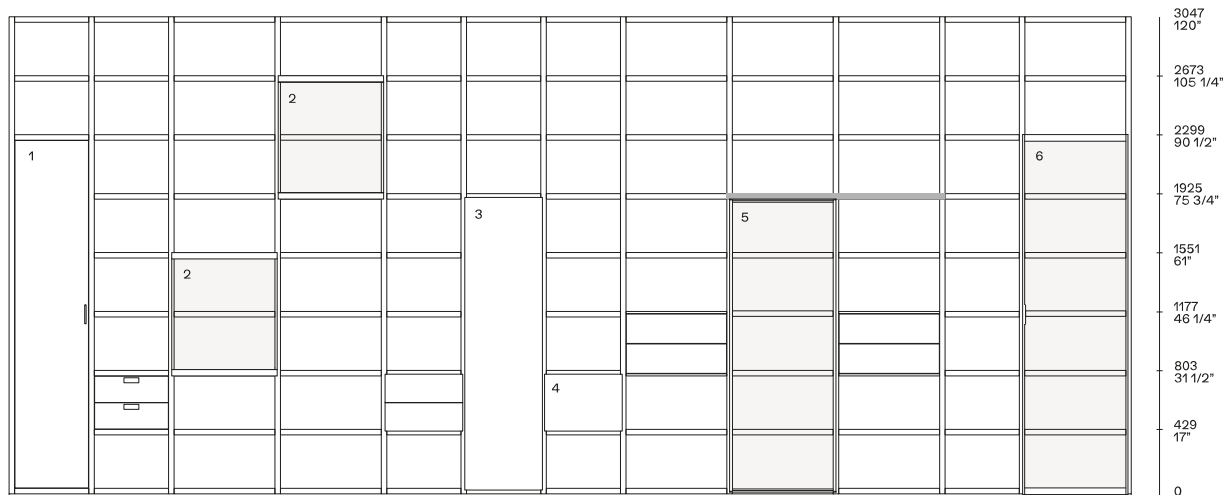
漆面铝

漆面金属

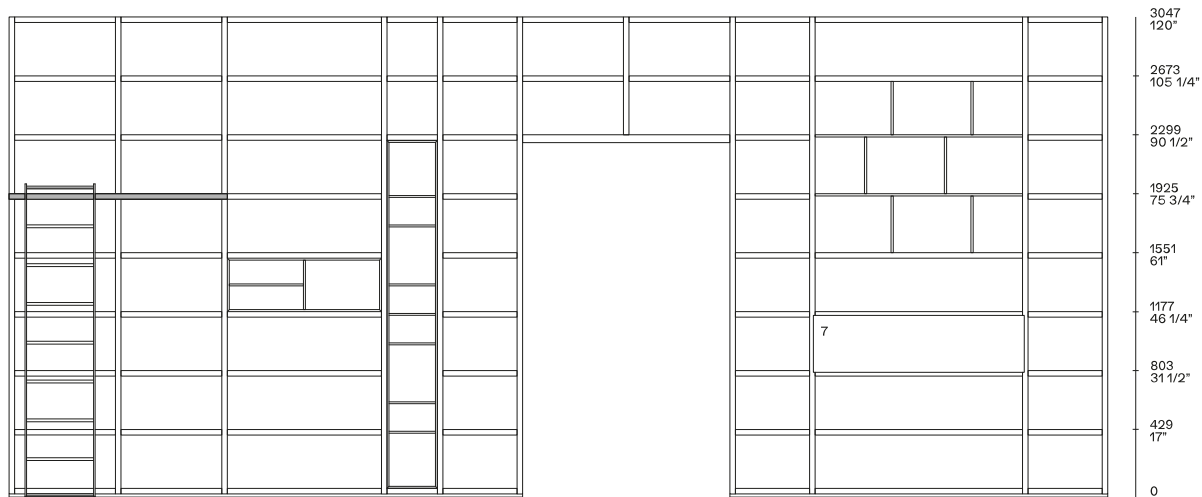
## Ghost

门

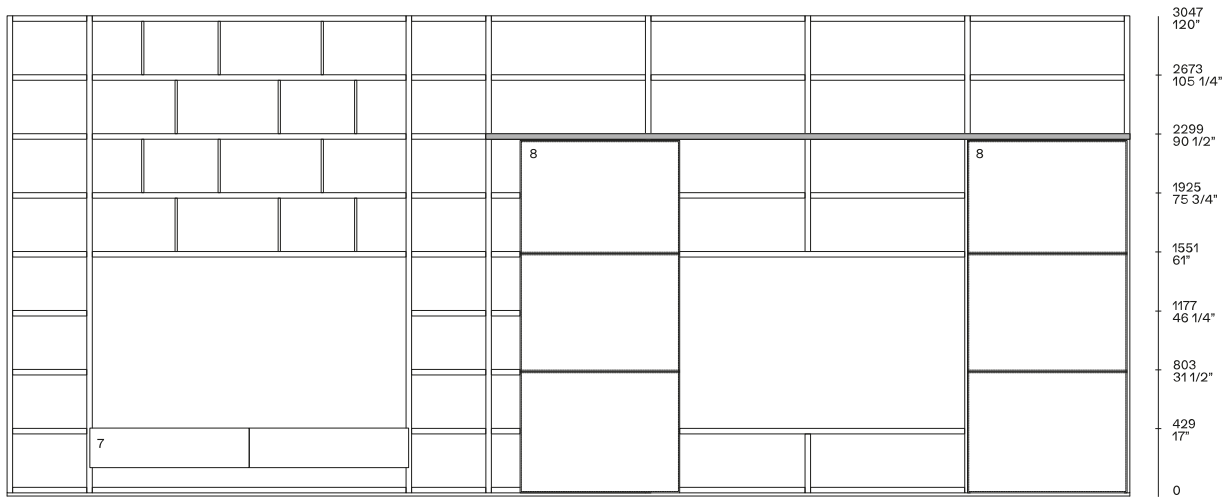
## Structure item



- 1 基本铰链门
- 2 Ghost 平齐或突出的铰链门
- 3 超薄铰链门
- 4 超薄翻盖门
- 5 框推拉门
- 6 Ego Day 铰链门



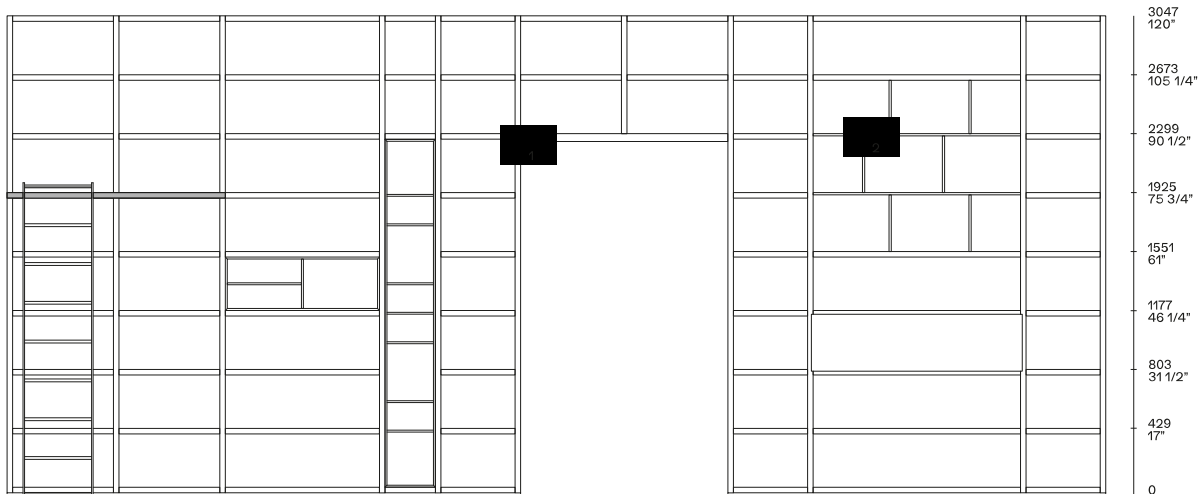
- 7 喷射翻盖门和抽屉



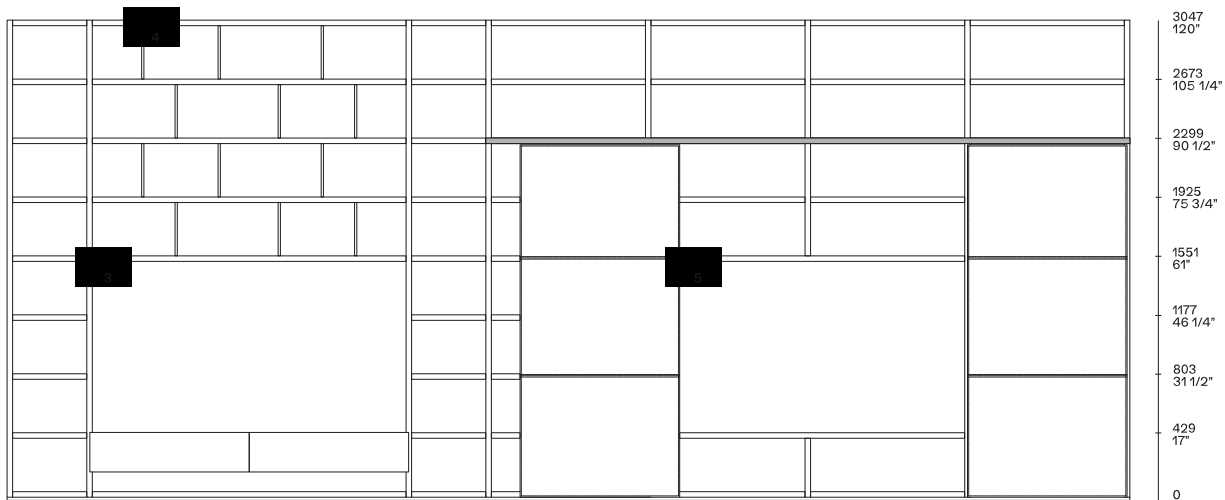
7 喷射翻盖门和抽屉

8 加粗推拉门

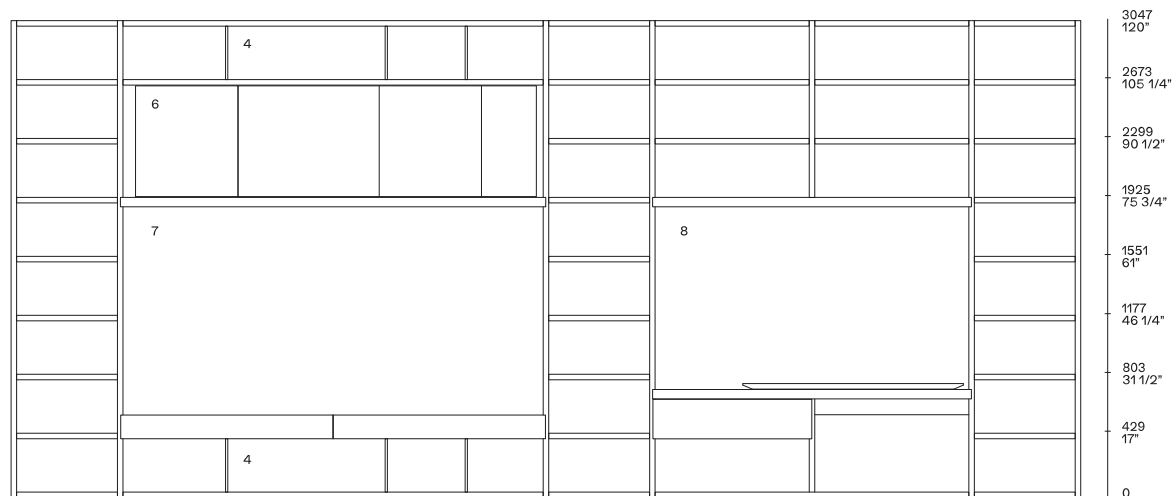
## 结构元素



- 1 桥横杆
- 2 格 th 14



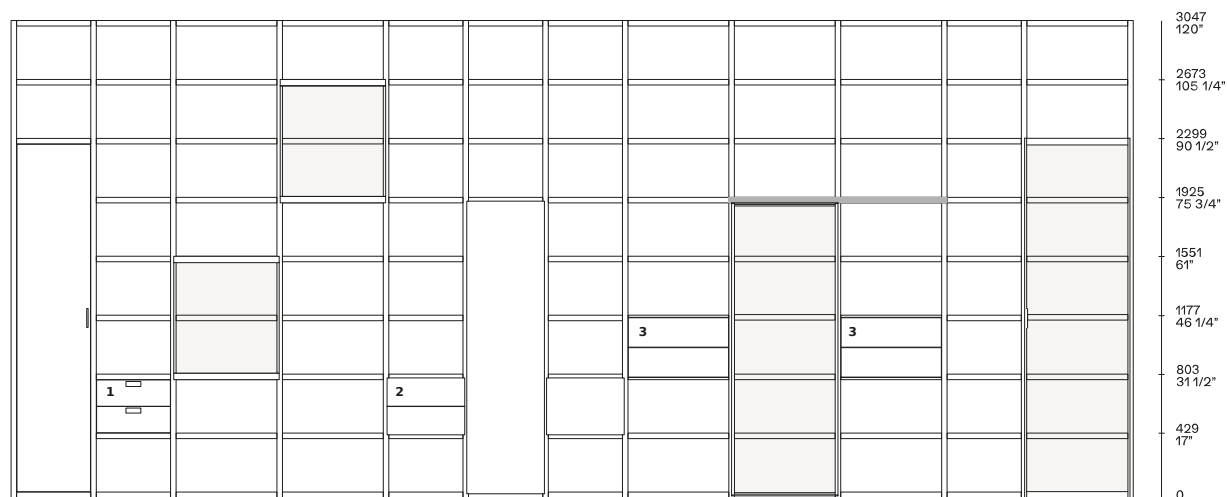
- 3 电视隔间
- 4 侧板 14 th
- 5 电视开箱



- 4 侧板 14 th
- 6 倾斜靠背
- 7 为电视配备的门户
- 8 门户配备办公桌

## 抽屉

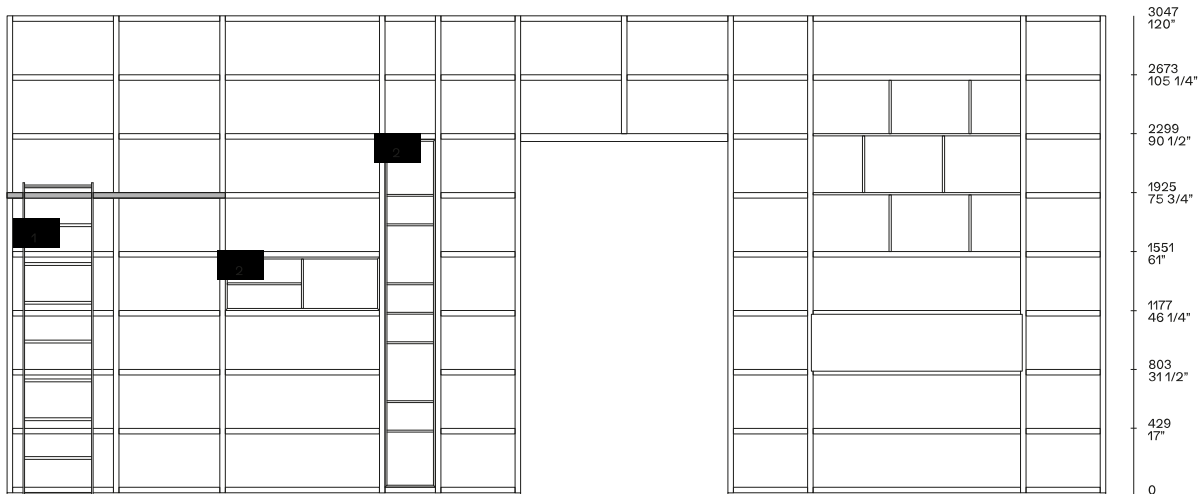
### Structure item



- 1 基本抽屉
- 2 个超薄抽屉
- 3 个平抽屉

装置

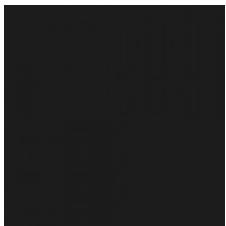
## Structure item



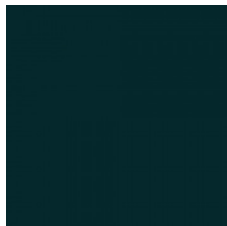
1 比例  
2 个配备的刀片

侧面、底座和搁板饰面

## Laccato

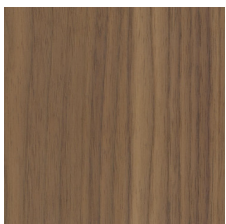


哑光漆



亮漆面

## Essenza



木材

靠背饰面

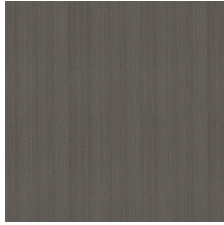
## Laccato



哑光漆



亮漆面



金属漆

## Essenza



木材