



DESCRIZIONE

Tipologia	Poltrona
Struttura	Metallo satinato o verniciato
Rivestimento finale	Pelle o cuoio o cuoio intrecciato colori o pelle Hairy non sfoderabile
Seduta / Schienale	Poliuretano flessibile

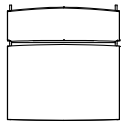
DIMENSIONI



675
26 1/2"

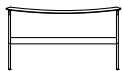


365
14 1/4"



735
29"

730
28 3/4"



390
15 1/4"



365
14 1/4"

730
28 3/4"

490
19 1/4"



FINITURE SEDUTA E SCHIENALE

Pelli



Spring



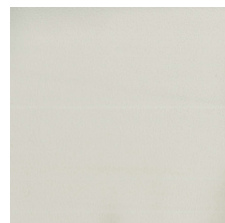
Colors



Silk



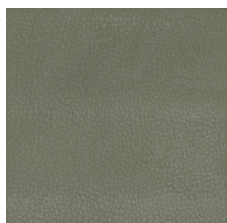
Deep



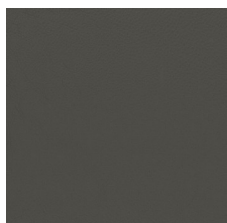
Special



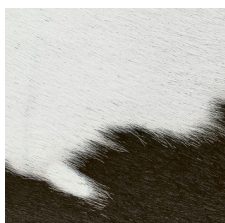
Invecchiata



Nabuk

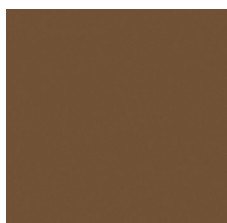


Soft

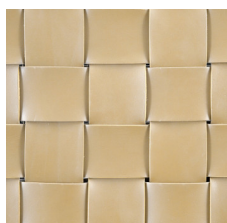


Hairy

Cuoio



Cuoio



Cuoio intrecciato

FINITURA STRUTTURA

Parti metalliche



Parti metalliche