

STYLEBOOK



Poliform



STYLEBOOK

Poliform



Stylebook is the highest expression of Poliform's taste and style. Going through, one by one, the rooms of a villa suspended between land and sea, surrounded by wild nature, the story being told is that of a lifestyle, more so than just a style. The domestic environment is imagined as a fluid space where systems and decor are perfectly integrated and give life to a total architecture. The architectural elements connect the different areas, while the furniture is intertwined with ceramics, paintings, sculptures, and baskets created by contemporary artists and artisans who are credited with the essential job of updating traditional materials and processes. It is through their know-how that Poliform's sense of taste takes shape and is translated into a universe where nothing is left to chance and commitment to quality is absolute.





Interior I

13

Abigail Ozora Simpson

41

Interior II

53

Marco Minetti

85

Interior III

97

Jon Llewelyn

125

Interior IV

137

Esmé Hofman

165

Interior V

177



Harmony in details

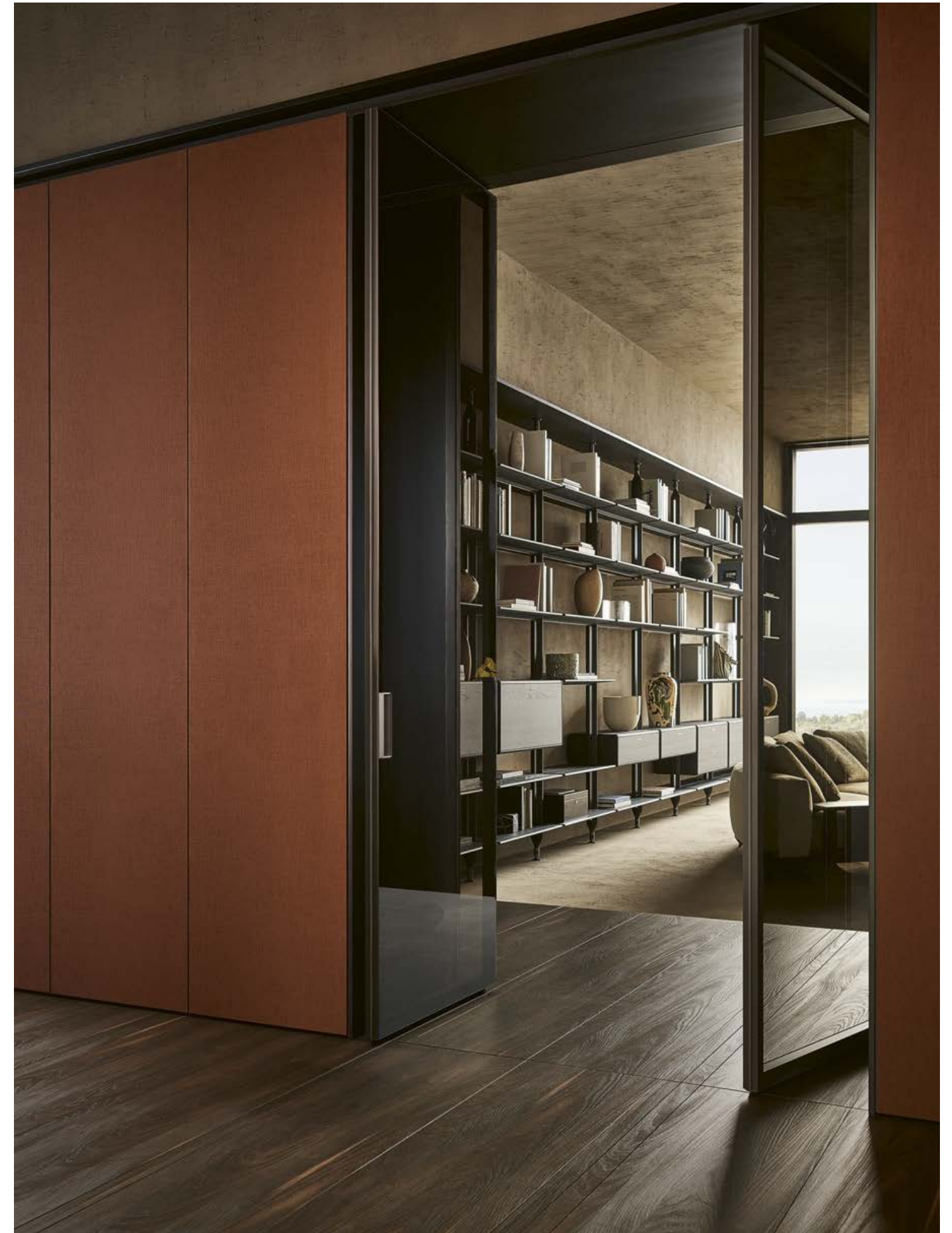


Interior I







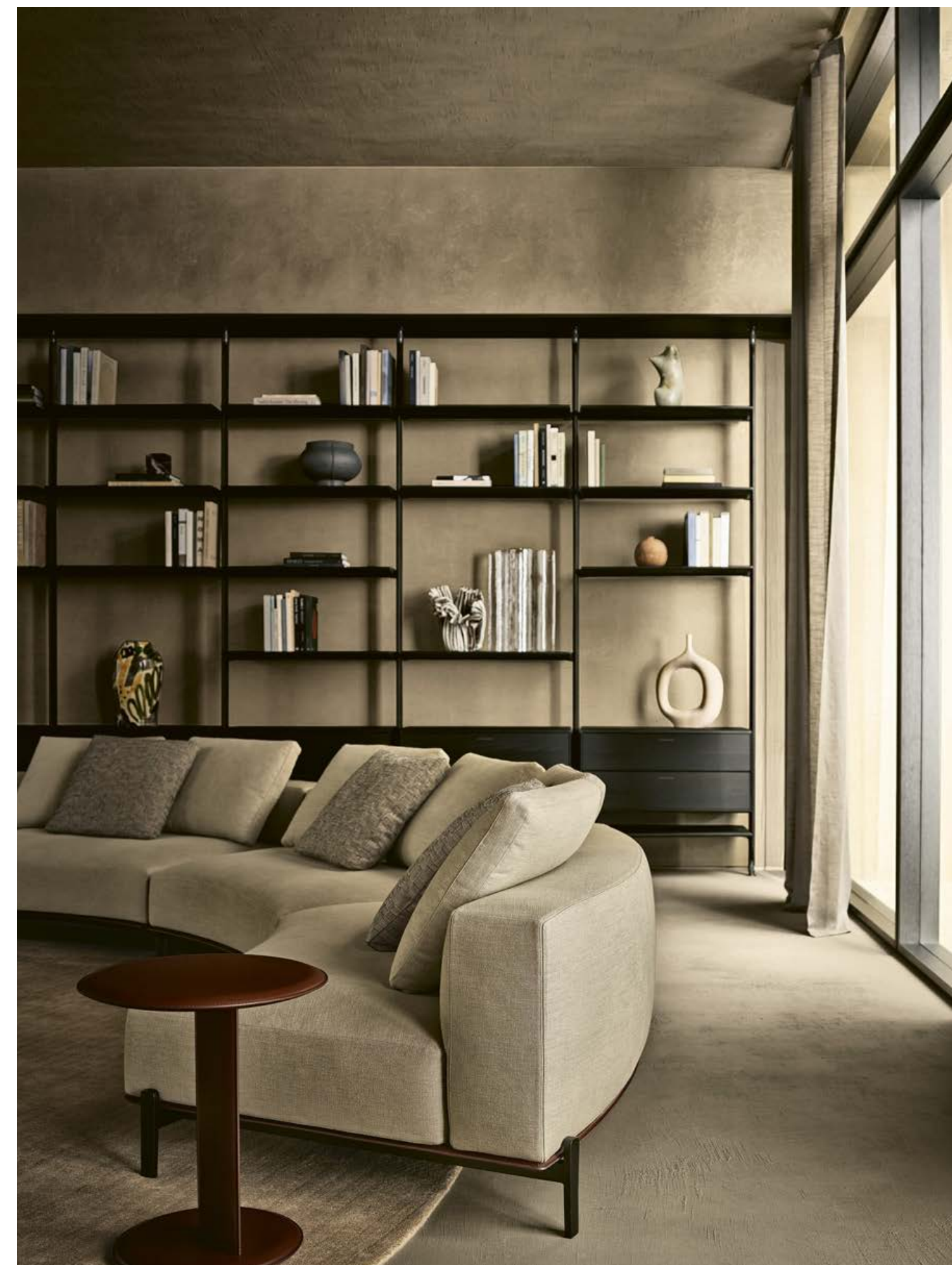










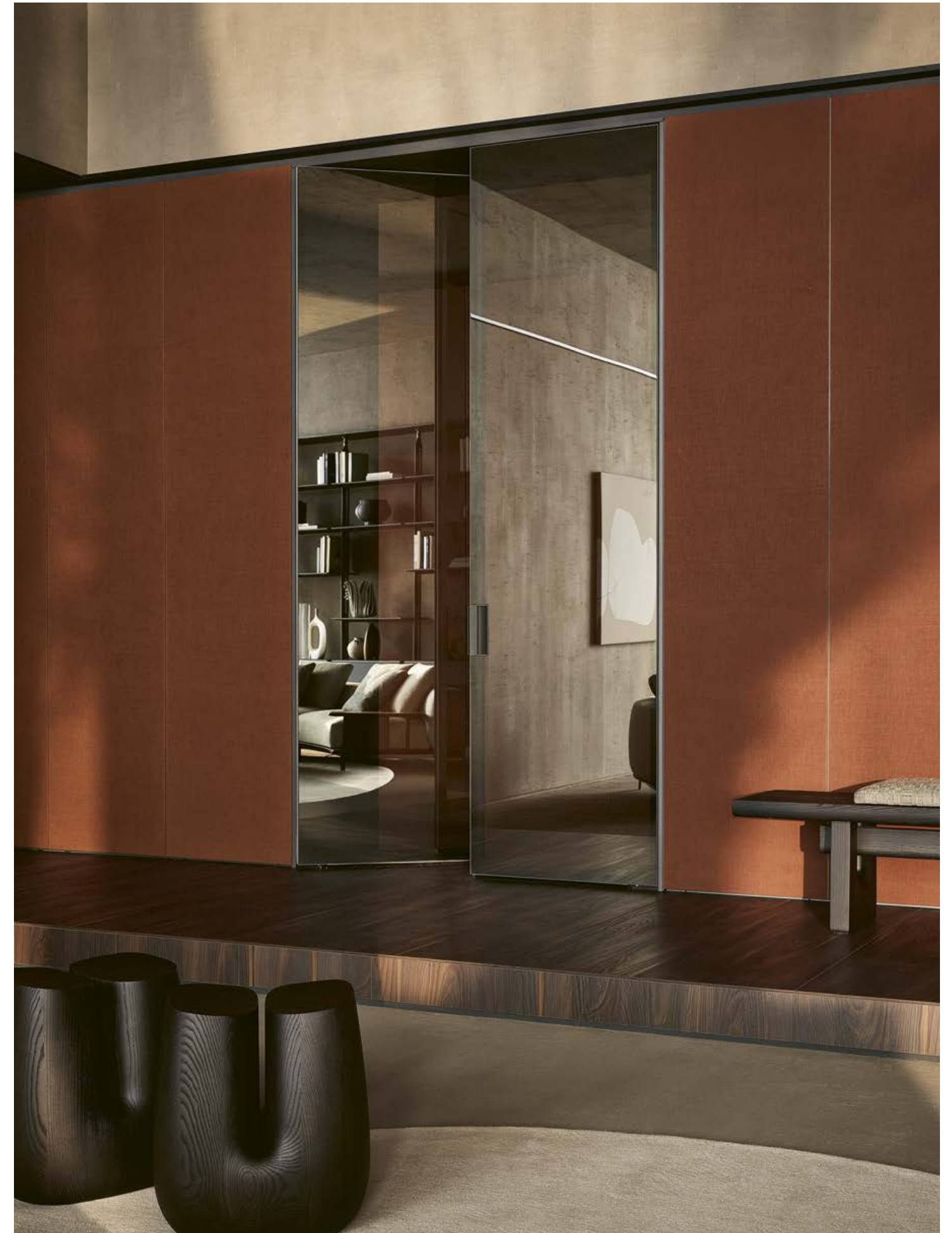














pp. 13, 14-15, 17
Kensington table, design Jean-Marie Massaud, structure ferro with spatula finish and top in fumé glass.
New York pouf, design Jean-Marie Massaud, removable cover in fabric Janaki 01 avorio and glossy brown nickel feet. Nara bench, design Jean-Marie Massaud, solid wood stained black elm. Carpet Plain natural.

pp. 16, 19
Surface wall panelling, design R&D Poliform, fabric lino bruciato and profiles mat ardesia. Pivot Plus doors, design Studio Kairos, portal and jamb mat ardesia, door in fumé reflective glass with mat ardesia Plus handle and frame.

pp. 20-21, 23, 24, 25, 26-27, 29, 30-31, 32, 33, 35
Brera sofas, design Jean-Marie Massaud, removable cover in fabric Kiala 02 champagne, cushions in fabric Janaki 01 avorio, base and Slim armrest in hide 07 castagna, mat brown nickel feet. Mush coffee tables, design Jean-Marie Massaud, in the centre, tops in black elm and mat sahara noir marble with polyester finish, black elm structure; next to sofa, top and structure in hide 07 castagna. Ube stools, design Jean-Marie Massaud, solid wood stained black elm. Carpet Shindo natural. Lexington bookcase, design Jean-Marie Massaud, black elm and mat ardesia floor-ceiling uprights with levelling feet in nickel ardesia. Shelves in black elm and mat ardesia, integrated led light. Storage units with flap doors and drawers in black elm with handles in nickel ardesia.

p. 36-37, 39, 40
Surface wall panelling, design R&D Poliform, fabric lino bruciato and profiles mat ardesia. Pivot Plus doors, design Studio Kairos, portal and jamb mat ardesia, door in fumé reflective glass with mat ardesia Plus handle and frame. Nara bench, design Jean-Marie Massaud, solid wood stained black elm, cushions with cover in removable fabric Janaki 01 avorio. Brera sofas, design Jean-Marie Massaud, removable cover in fabric Kiala 02 champagne, cushions in fabric Janaki 01 avorio, base and Slim armrest in hide 07 castagna, mat brown nickel feet. Mush coffee tables, design Jean-Marie Massaud, tops in black elm and mat sahara noir marble with polyester finish, black elm structure. Lexington bookcase, design Jean-Marie Massaud, black elm and mat ardesia floor-ceiling uprights with levelling feet in nickel ardesia. Shelves in black elm and mat ardesia, integrated led light. Storage units with flap doors and drawers in black elm with handles in nickel ardesia. Ube stools, design Jean-Marie Massaud, solid wood stained black elm. Carpet Shindo natural.





Abigail Ozora Simpson

Sculpturing requires strength – and not only because of the weight of materials. Abigail Ozora Simpson is a contemporary sculptor working mainly on big scale projects: most of her work to date consists of vertical totemic sculptures, but her relationship with her artworks, no matter the size, is the same, since she is emotionally involved with every piece she makes. Over time, she started to create objects that transcend any immediate recognition of the process and even the material, in a slow journey that took her from function to non-function. Monumental and impactful, her pieces infuse indeed a sense of calmness and serenity.





“I had trained previously as an actor and there has always been a theatricality to my work”.





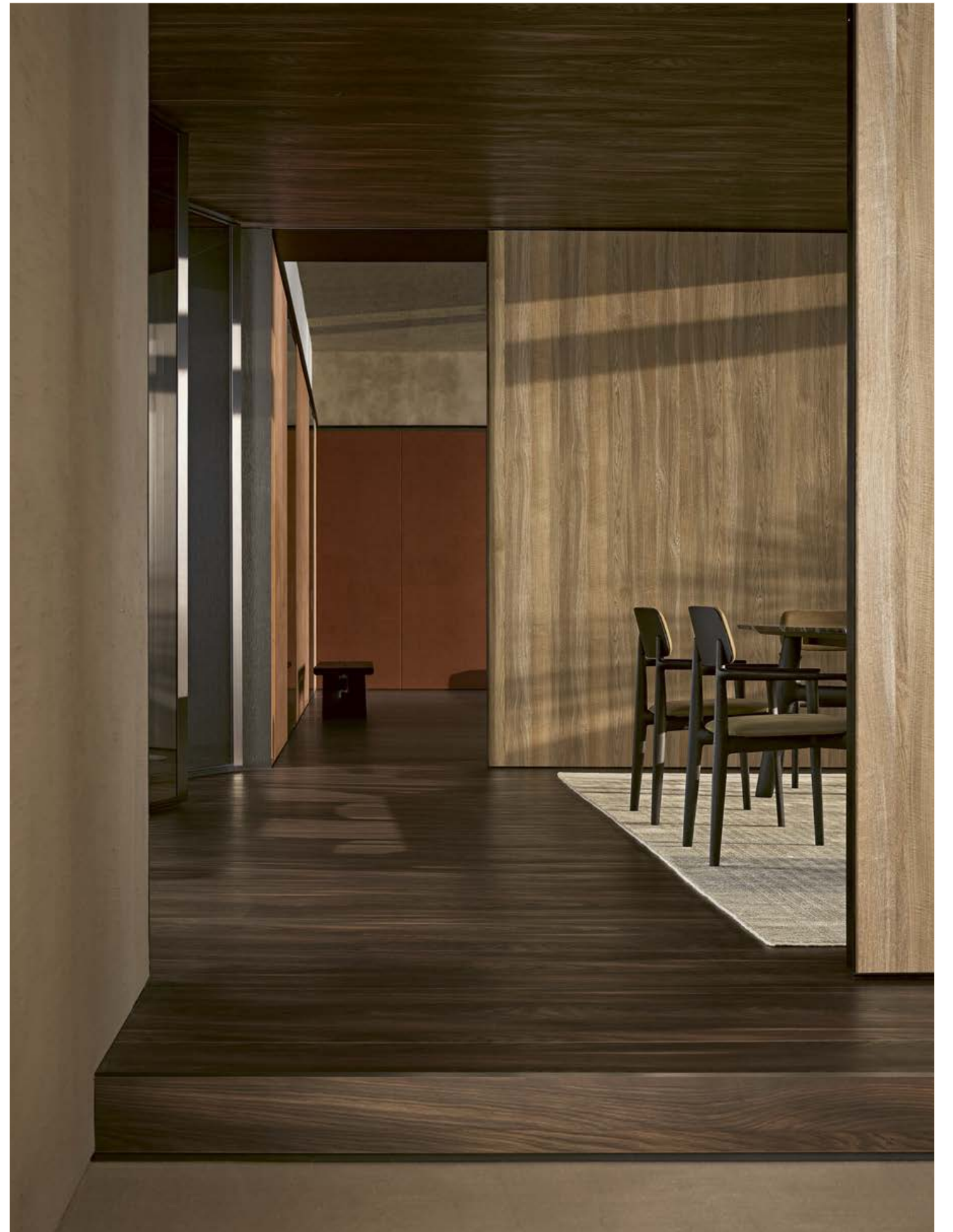
“The form has always been paramount in my work and my aim is to create objects that transcend any immediate recognition of the process and even the material”.







Interior II









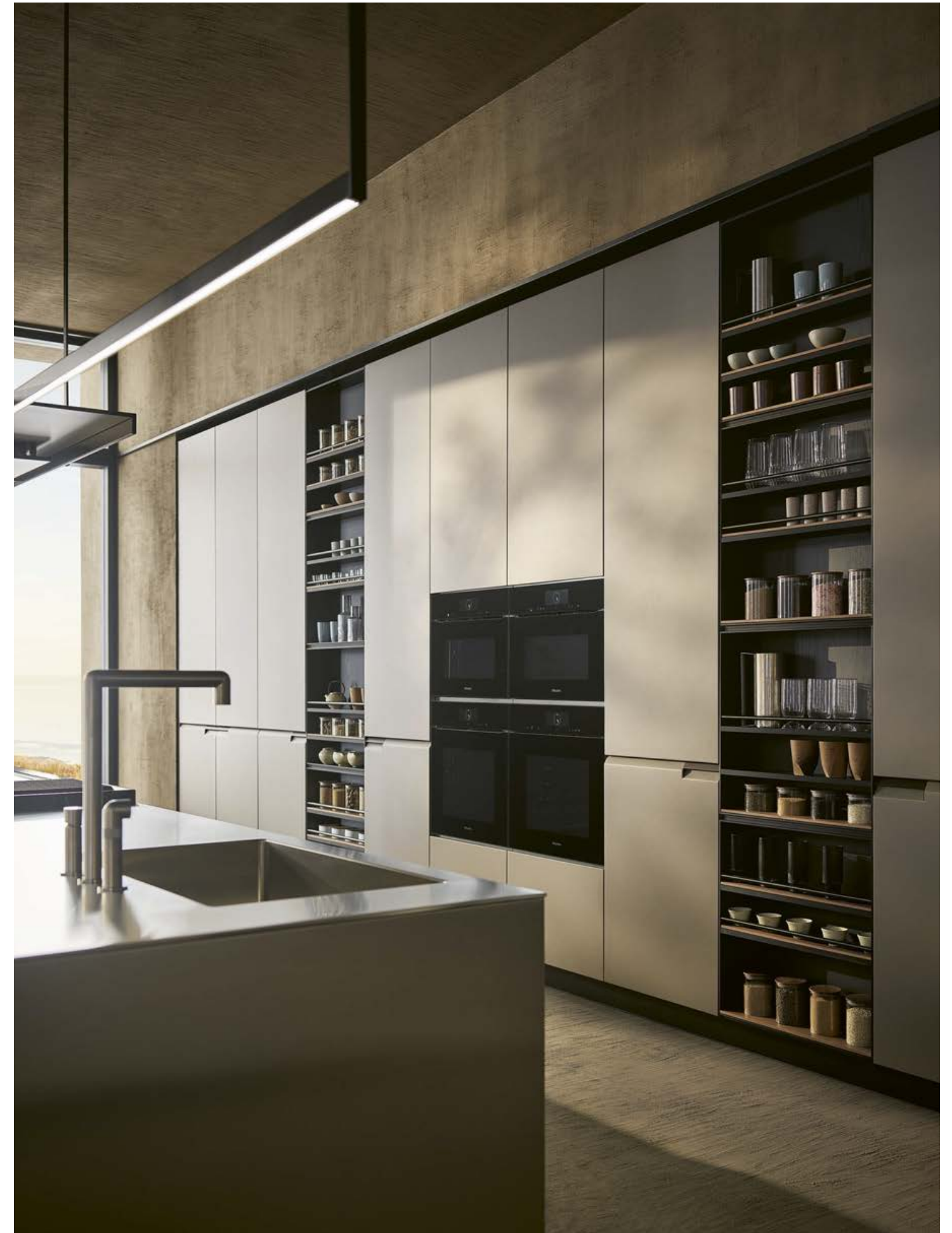








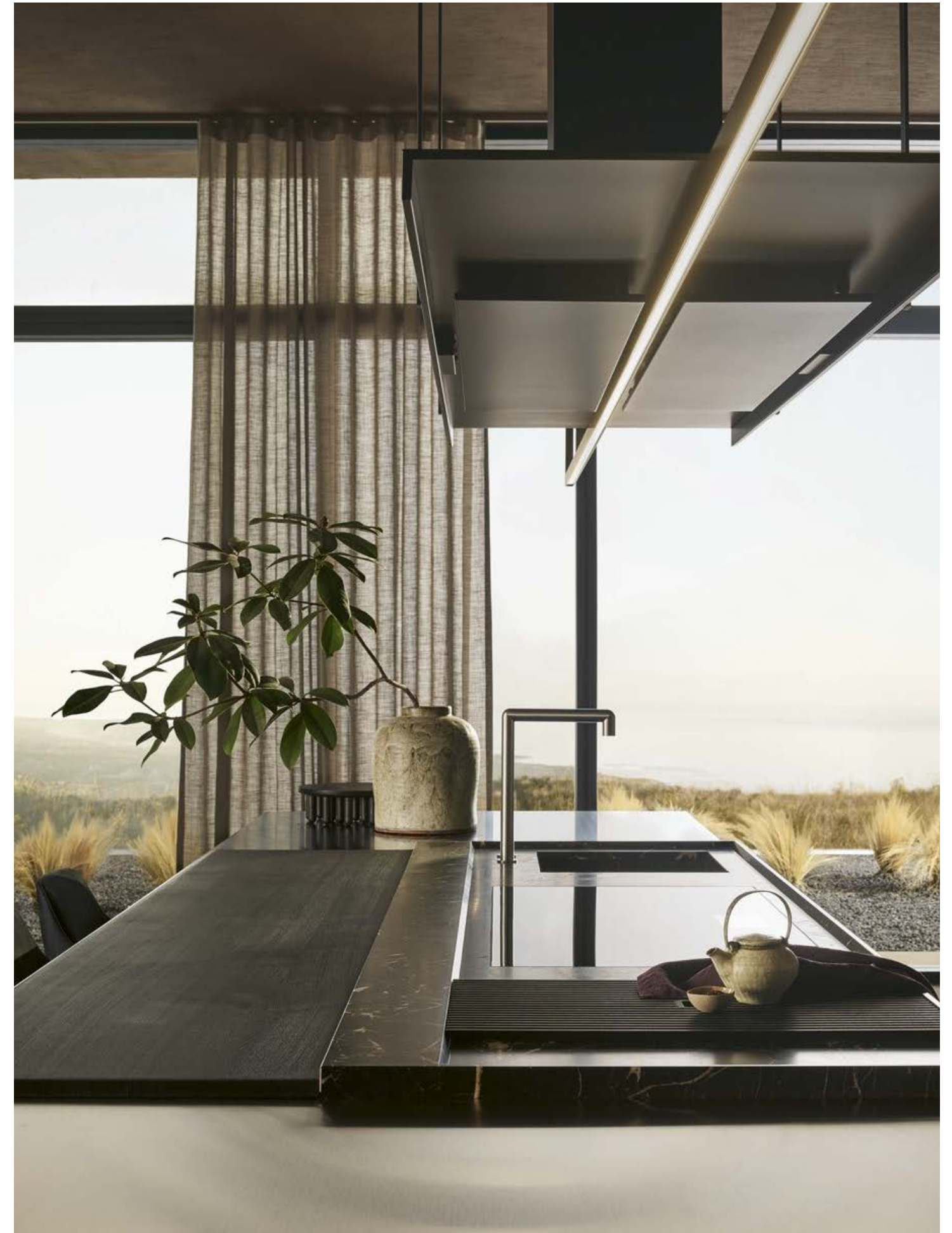


















pp. 53, 54-55, 57, 58, 59

Curve table, design Emmanuel Gallina, top in mat marble verde lepanto, structure in black elm with cross-piece covered in hide 38 oliva. Curve chairs with armrests, design Emmanuel Gallina, non-removable cover in leather Nabuk 10 oliva and structure in black elm. Carpet Shindo celadon. Aiko sideboards, design Jean-Marie Massaud, structure in black elm, sides and doors in transparent extralight glass, handle and base with feet mat brown nickel. Inner shelves in fumé glass, led light.

pp. 61, 62-63

Aiko sideboards, design Jean-Marie Massaud, structure in black elm, inner backs in mat lacquer matching colour hide fango, sides and doors in transparent extralight glass with lino carbone insert, handle and base with feet mat brown nickel. Inner shelves in fumé glass, chest of drawers in black elm with drawer fronts in hide o8 fango, led light. Ube stools, design Jean-Marie Massaud, solid wood stained black elm. Carpet Shindo grey.

pp. 65, 66-67, 68, 69, 71, 72-73, 74, 75, 76-77, 79, 80-81, 82, 83, 84

Shape kitchen, design R&D Poliform. Central island with doors and pull-out baskets in scotch brite steel, Shape integrated handle in mat lacquer moka, top and finishing sides in scotch brite steel, top with drip edge in mat marble noir saint laurent. Tape snack with top and sides in solid wood stained black elm. Sophie Lite stools, design Emmanuel Gallina, removable cover in leather Nabuk o8 prussia, structure in black elm and footrest in mat brown nickel. Sail hood personalized Poliform in mat black painted steel and light bar as long as the island. High tall units with doors and pull-out baskets in roccia embossed lacquer, Shape integrated handle in mat lacquer moka. Deep Shaker Wall with anodized moka structure, back in black elm, bars in moka embossed lacquer, shelves in walnut canaletto and glass and ceramic jars. Pivot Plus doors, design Studio Kairos, portal and jamb in moka embossed lacquer, door in fumé reflective glass with mat moka Plus handle and frame.

p. 79, 80-81

Central island, close up of the top in scotch brite steel combined with the top with drip edge in mat marble noir saint laurent, Tape snack top in solid wood stained black elm. Top with drip edge equipped with integrated sink in mat marble noir saint laurent, induction hob flush built-in and drip tray in PaperStone® nero. Doors and pull-out baskets in scotch brite steel, Shape integrated handle in mat lacquer moka. Sail hood personalized Poliform in mat black painted steel and light bar.







Marco Minetti

Clay objects speak volumes. Firstly through the materials, which inform the way a piece feels, looks, and functions. Then through form. A clay artist working in California and trained using old techniques in Korea, Marco Minetti is inspired by the intangible energy of the ancient forms that derive from necessity – pure, functional, and decoratively honest. He does everything by hand, from digging local clays to washing the wood ash to use in glazes, almost like meditation. In his practice, he seeks to capture the present moment while honoring the past, so that his collections are both an invitation to converse with the earth and a connection with an ancient, collected wisdom.





“Movements are a kind of meditation also — repetitive yet intuitive, each movement is done with purpose and has been honed over generations of collected wisdom”.





“Every time I sit down with this process to make a piece
I feel a connection to those makers of the past.
As the skills are disappearing, I feel a strong urge
to uphold the traditional methods”.







Interior III







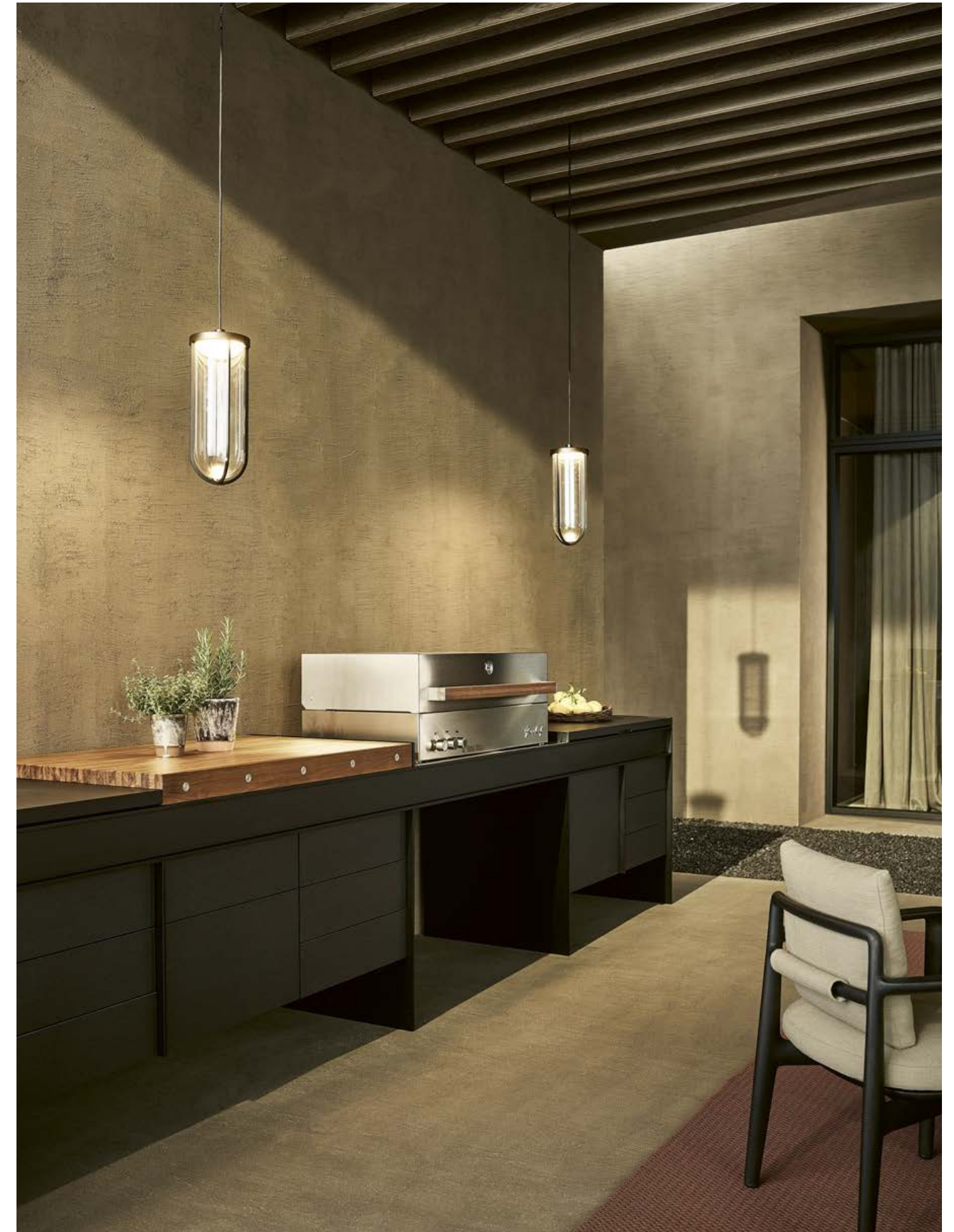






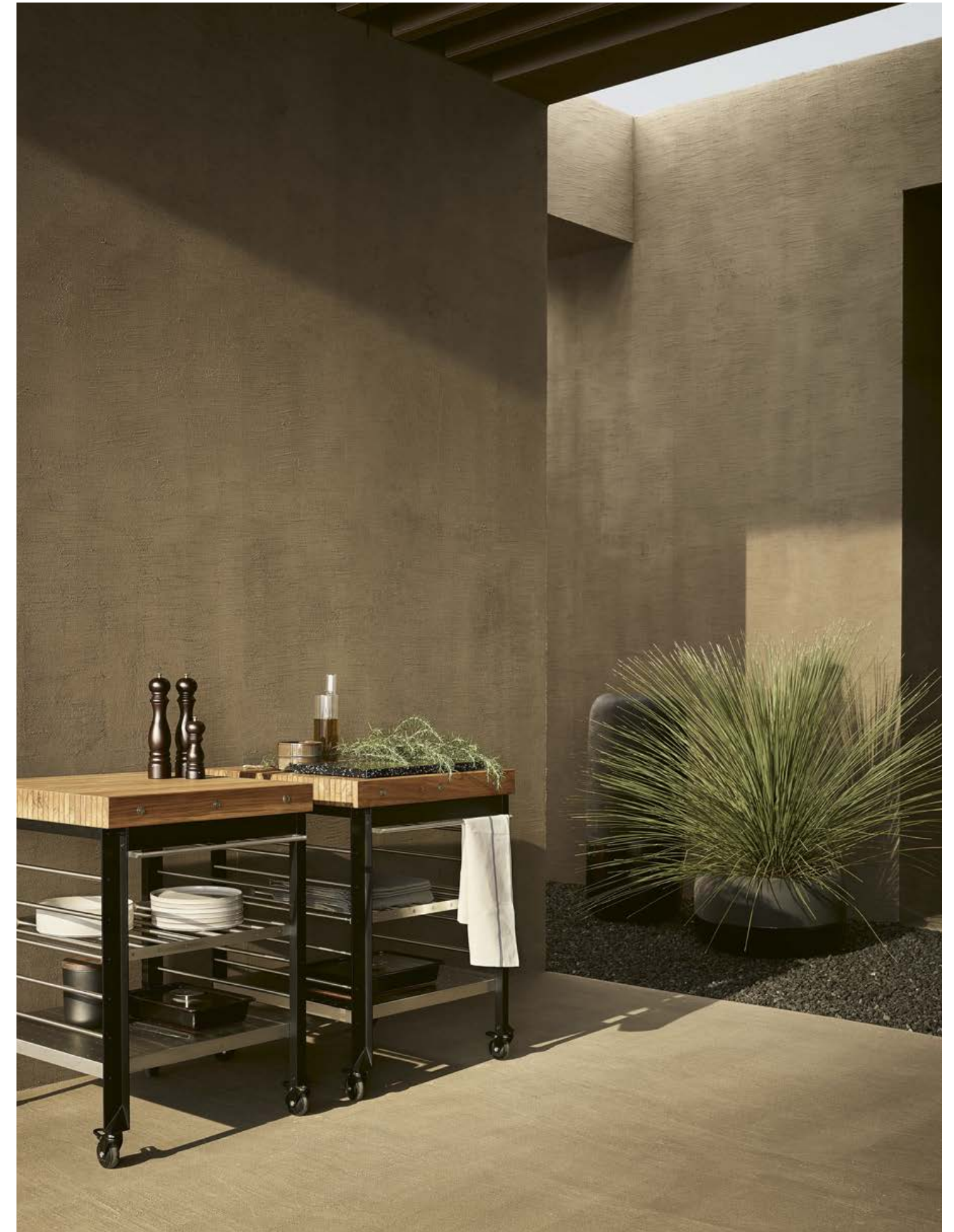


















pp. 97, 98-99, 101, 102-103, 104, 105

Ketch sofas, design Jean-Marie Massaud, structure in solid black stained iroko with backrest in EVA nocciola. Cover with decorative drawstring stitching, in removable fabric Karif 02 burro, cushions in fabric Karif 02 burro e Ghibli 04 sabbia. Ketch armchairs, design Jean-Marie Massaud, structure in solid black stained iroko with backrest in EVA nocciola. Cover with decorative drawstring stitching, in removable fabric Karif 04 tabacco with lower back cushions. Ketch coffee table, design Jean-Marie Massaud, fumé fused glass top, legs in solid black stained iroko with structure in mat brown nickel. Crew coffee tables, design Jean-Marie Massaud, mat glazed gres grafite with glossy glazed top and upper part of the edge.

pp. 107, 108-109, 110, 111

Monolith table, design Emmanuel Gallina, top and legs in Cementoskin® grafite. Magnolia chair, design Emmanuel Gallina, structure in solid black stained iroko, removable cover in fabric Karif 03 sabbia. Carpet Kamir mattone.

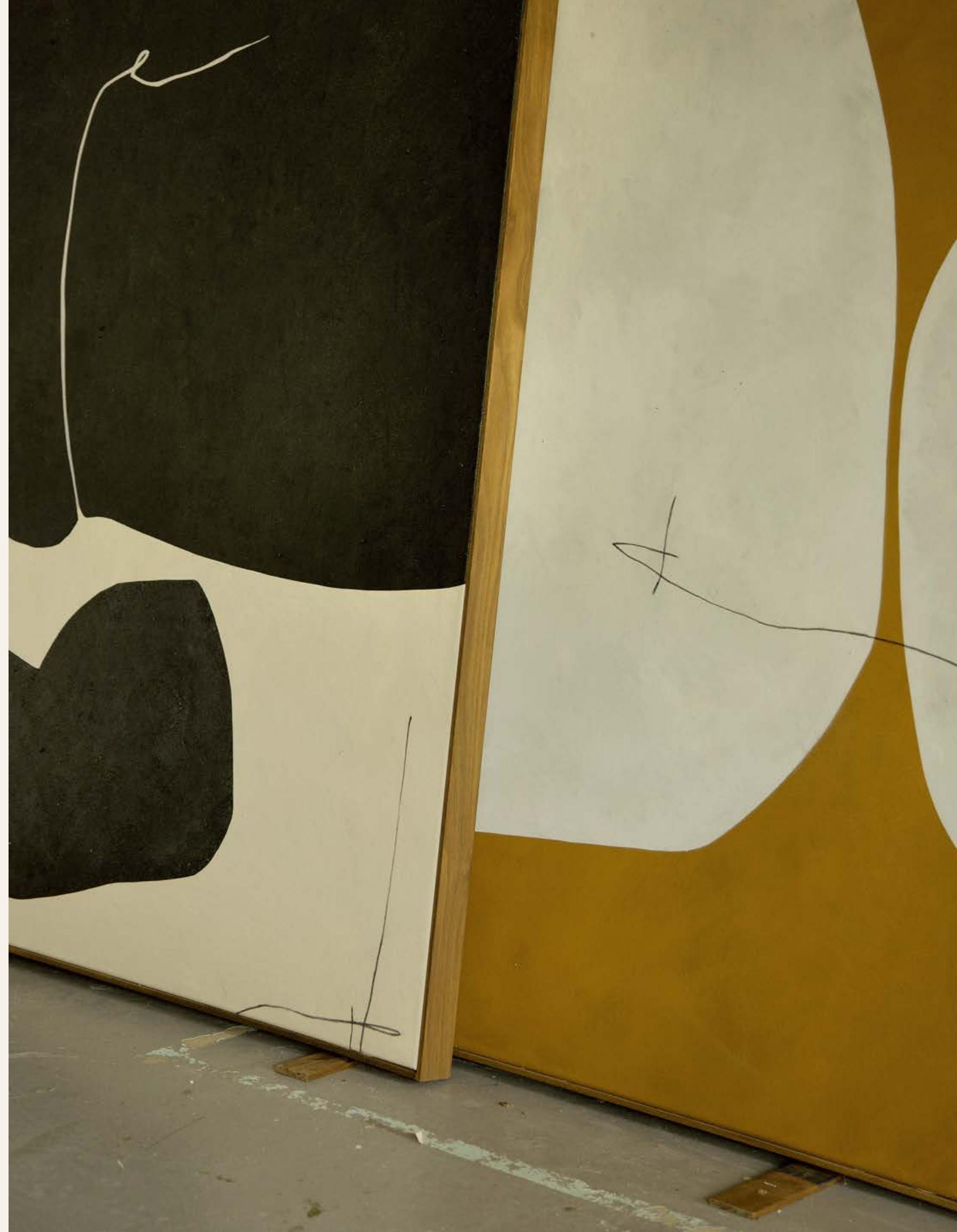
pp. 113, 114-115, 116, 117, 119

Land kitchen, design R&D Poliform and cap., bridge structure in mat nero lacquered aluminium with hanging storage units, structure in steel and sides in stratified laminate nero. Drawers and pull-out baskets with fronts in Inalco MDi® carbone, sides in mat nero lacquered aluminium. To the left, top in steel with squared drip edge and sink, folding mixer; to the right, top with compartments in steel, both with lids in Inalco MDi® nero and frame in nero painted aluminium. Work top in teak with steel tie rods. Barbecue Flamkraft with support in satin steel. Inner drawer equipment in teak and steel. Carts with structure in nero painted metal, scotch brite shelves and steel bars, work tops in teak with steel tie rods.

p. 120-121, 122, 123, 124

Le Club armchairs, design Jean-Marie Massaud, cover in Libeccio visone, non-removable woven fabric. Strata coffee tables, design Emmanuel Gallina, fumé fused glass top and base in Cementoskin® grafite. Crew vases, design Jean-Marie Massaud, mat glazed gres grafite with glossy glazed lower part.

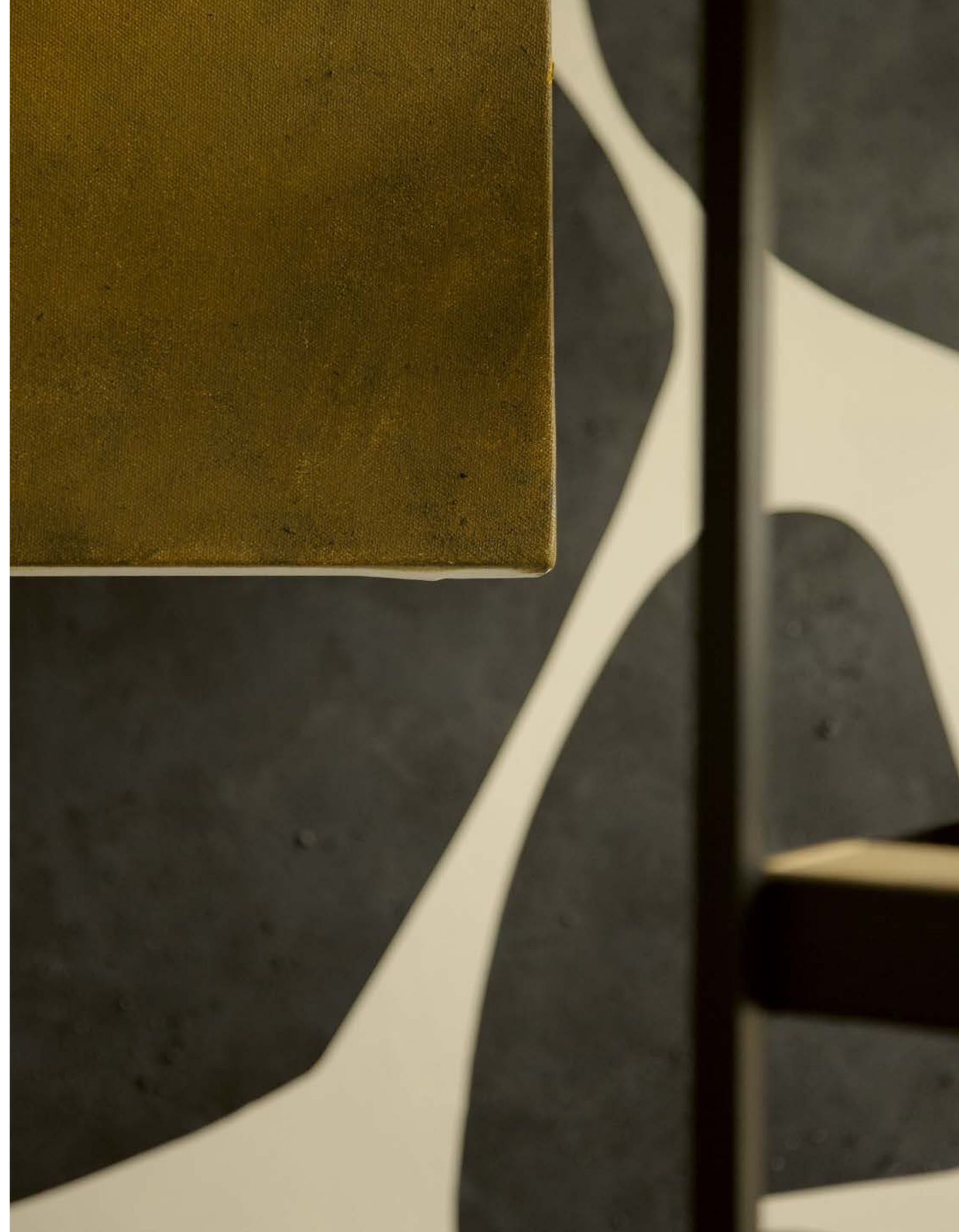






Jon Llewelyn

“There is no essential difference between artist and artisan”, Walter Gropius used to say to the students of Bauhaus, the art school he founded in Weimar. A principle that still holds true for Jon Llewelyn of Formworks, graphic designer and abstract artist researching the always evolving relationship between shapes, colors and positive and negative space. Over the years, the early strong geometric pieces have naturally evolved into a looser, more expressive style that combines knowledge and intuition. Inspired by contemporary interiors, architecture, mid-century furniture and lighting, and the Bauhaus movement, Llewelyn brings shapes and colors to life.





“The Bauhaus movement was a great influence and formed my love of mid-century art and design”.



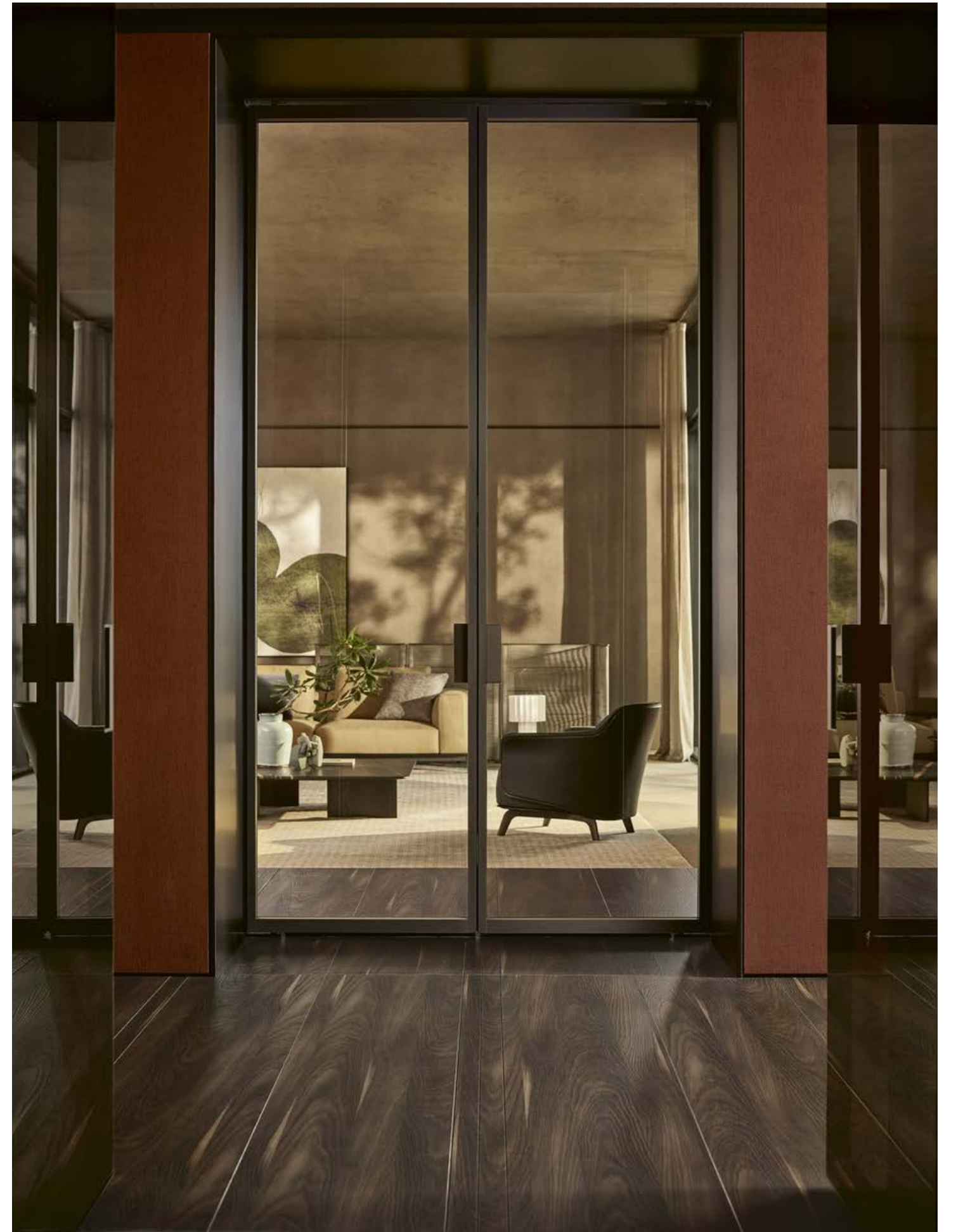


“My work is founded on the relationship between shapes,
objects, line work and positive and negative space.
It’s instinctual and abstract”.





Interior IV











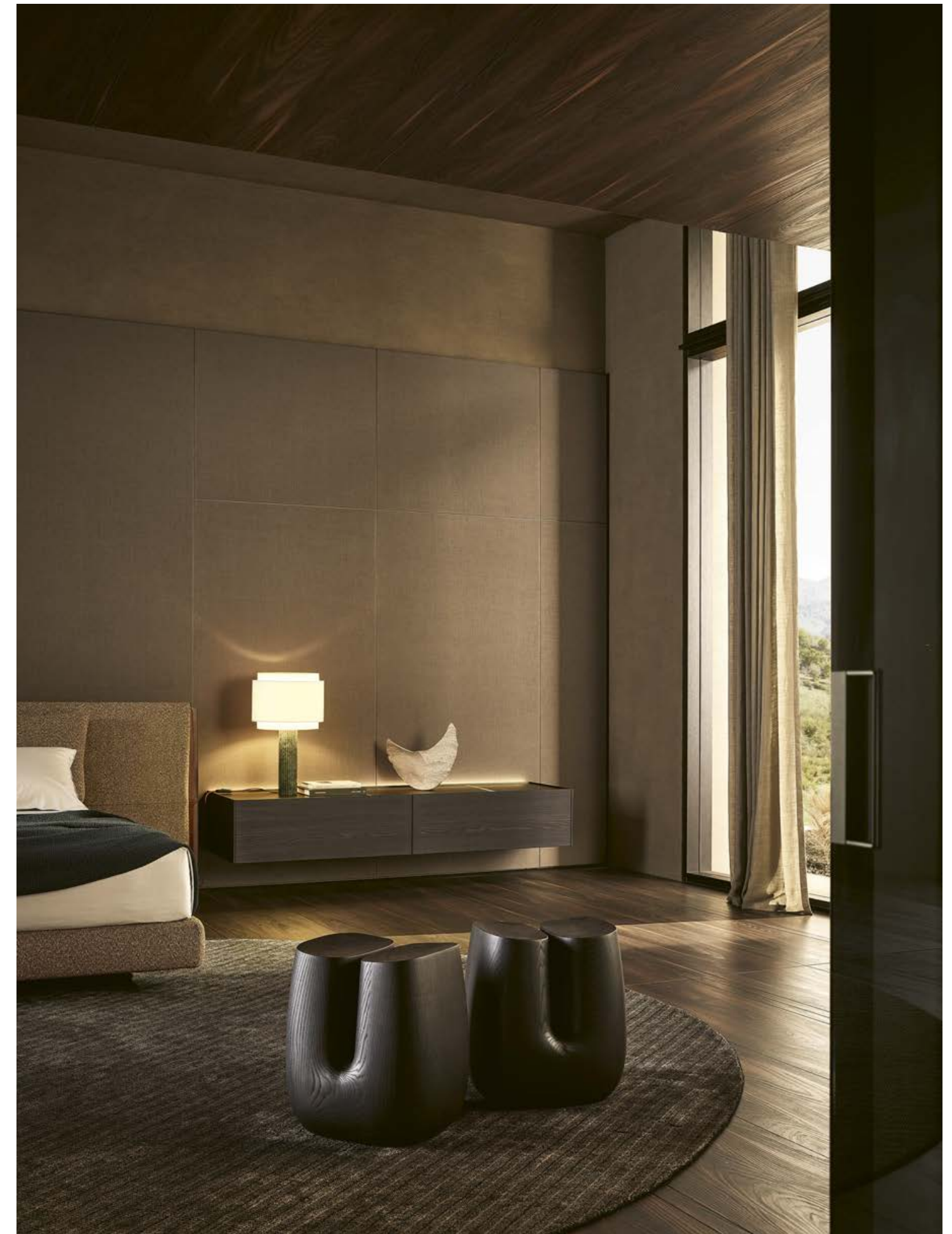




















pp. 137, 138-139, 141, 142, 143, 144-145

Brera sofa, design Jean-Marie Massaud, removable cover in fabric Kiala o8 bronzo, cushions in fabric Janaki o2 champagne and velvet Persia 14o4 carbone; base, shelf and Slim armrest in hide o2 nero, mat brown nickel feet. Hima screen, design Jean-Marie Massaud, four-element configuration in the low version, structure in mat brown nickel and rope in the colour cenere. Mush coffee tables, design Jean-Marie Massaud, in the centre, tops in mat sahara noir marble with polyester finish and black elm structure; top and structure in hide o2 nero; next to sofa, top and structure in black elm. Kaori armchairs, design Jean-Marie Massaud, outer shell and base in hide o2 nero, inner shell and seat in removable leather Silk o8 nero, mat brown nickel feet. Orbit coffee table, design Jean-Marie Massaud, top and structure in bronzed glass, structure in blown glass. Carpet Shindo natural. Surface wall panelling, design R&D Poliform, fabric lino scuro and profiles mat ardesia. Pivot Plus doors, design Studio Kairos, portal and jamb mat ardesia, door in fumé reflective glass with mat ardesia Plus handle and frame.

pp. 147, 148-149

Surface wall panelling, design R&D Poliform, fabric lino scuro and black elm print, profiles mat ardesia, equipped with storage units and shelves Code, design R&D Poliform. Code suspended storage units in black elm with backlit top in mat marble sahara noir with polyester finish. Code backlit shelves in metal lacquer bronzo. Dimmable led lights.

pp. 151, 152-153, 154, 155

Curve armchairs, design Emmanuel Gallina, non-removable cover in fabric Siro o2 lino and structure in black elm. Monolith table, design Emmanuel Gallina, low version with leg in mat lacquer bronzo and top in mat marble sahara noir polyester finish. Carpet Shindo grey.

p. 157, 158-159, 160

Yume bed, design Jean-Marie Massaud, headboard with cushions and padded base with removable cover in fabric Carson o5 pernice, headboard inserts in hide o7 castagna. Coordinated bed linen in cotton Provence o3 ghiaccio with profile in bianco. Linus blanket notte. Surface wall panelling, design R&D Poliform, fabric lino scuro and profiles mat ardesia. Code suspended storage units, design R&D Poliform, drawers and sides in black elm with backlit top in mat marble sahara noir with polyester finish, dimmable led lights. Orbit coffee table, design Jean-Marie Massaud, top and structure in bronzed glass, structure in blown glass. Ube stools, design Jean-Marie Massaud, solid wood stained black elm. Carpet Shindo grey.

p. 161, 162-163, 164

Senzafine Match wardrobes, design R&D Poliform, leaf doors in fabric lino scuro, profiles and Match handles in mat ardesia. Surface wall panelling, design R&D Poliform, black elm print with profiles mat ardesia and top in metal lacquer bronzo, equipped with shelves and storage units and Code, design R&D Poliform. Code shelves and floorstanding storage units in metal lacquer bronzo, top in mat marble sahara noir with polyester finish, dimmable led lights. Pivot Plus door, design Studio Kairos, portal in metal lacquer bronzo, jamb mat ardesia, door in fumé reflective glass with Plus handle and mat ardesia frame. Le Club armchairs, design Jean-Marie Massaud, non-removable cover in leather Silk 12 senape. Orbit coffee table, design Jean-Marie Massaud, top and structure in bronzed glass, structure in blown glass. Carpet Shindo grey.







Esmé Hofman

Basket-making is one of the most ancient and widespread crafts of human history. Today just like five thousand years ago, techniques still depend on the material used and the purpose of the object, Esmé Hofman explains. She is a basket designer and weaver trained in Germany, in one of the only two schools left in Europe with this particular focus. There, she learnt different techniques like willow work, woven furniture, basketry and center cane basketry. A modern craftswoman, she is willing to break from tradition exploring new and alternative creative possibilities.





“After more than thirty years in Rotterdam, nowadays I live in the countryside, in a small village: this gives me more space to focus on my work”.





“As a modern craftswoman I am prepared to look beyond the borders of this traditional handicraft. This gives me freedom to explore creative possibilities, and generates other ways of making”.







Interior V













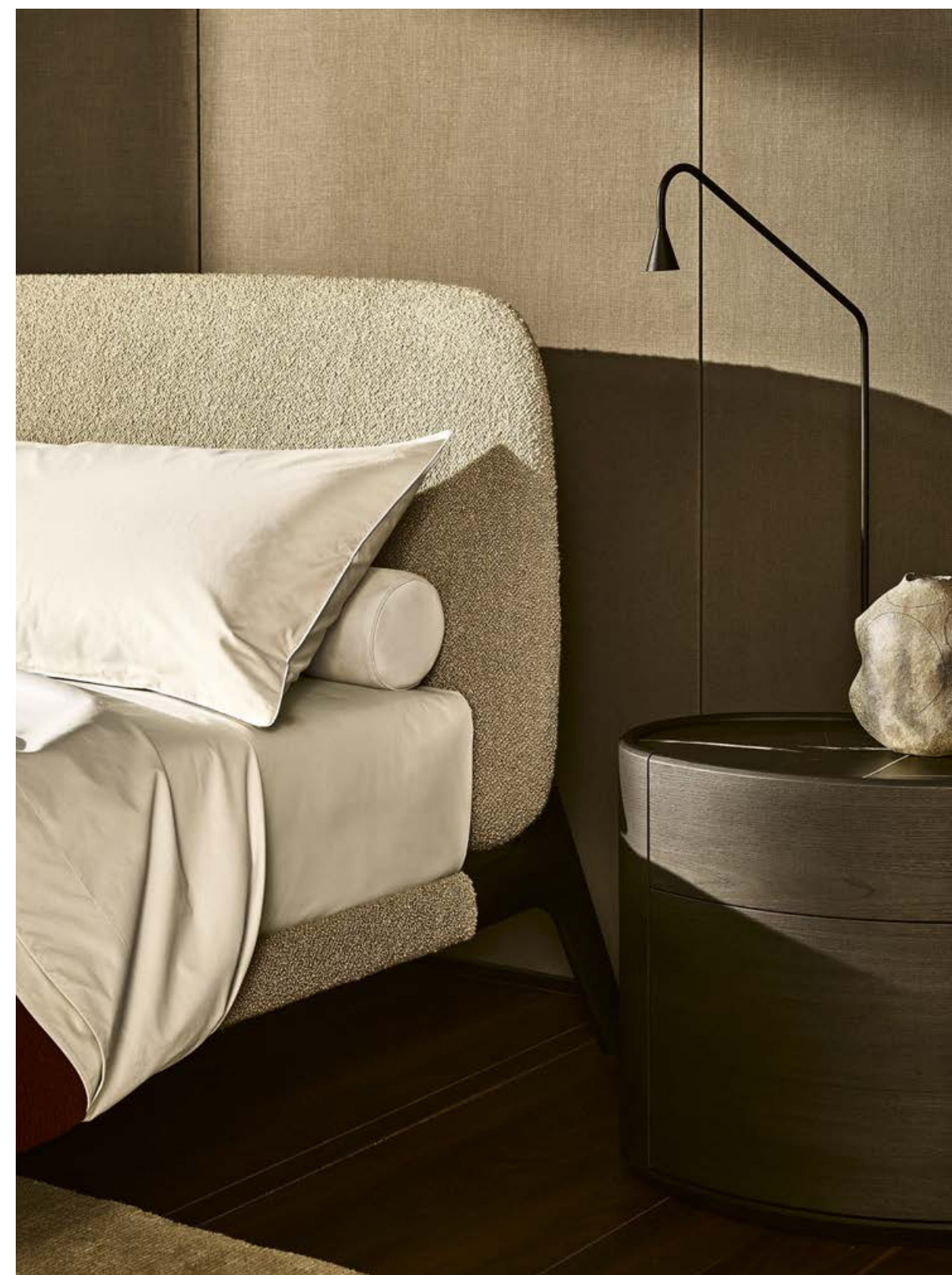














pp. 177, 178-179, 180, 181, 182-183, 187, 188-189
Lexington walk-in closet, design R&D Poliform, mat ardesia floor-ceiling uprights and levelling feet in nickel ardesia. Shelves in fumé glass and tecnocover Grain 01 elefante with mat ardesia frame, integrated led light. Hanging rails in tecnocover Grain 01 elefante and mat ardesia. Senzafine Plus glass wardrobe, design R&D Poliform, leaf doors in reflective transparent glass with mat ardesia frame, Plus mat ardesia handles. Interior in canvas grigio melamine with edges in ardesia melamine, frame sides in mat ardesia. Showcase drawers with fumé glass top, drawer with chamfered front in mat ardesia lacquer, lower drawers with fumé reflective glass fronts with edge and Track handle in mat ardesia. Hanging rails in tecnocover Grain 01 elefante and mat ardesia, integrated led light. Senzafine New Entry wardrobes, design R&D Poliform, leaf doors in metal lacquer bronzo, Rail handles in mat lacquer bronzo. Westside pouf and coffee table, design Jean-Marie Massaud, pouf with removable cover in fabric Arcadia 01 avorio, coffee table in black elm with top in mat marble verde lepanto. Ube stools, design Jean-Marie Massaud, solid wood stained black elm. Carpet Shindo celadon. Pivot Plus doors, design Studio Kairos, portal in metal lacquer bronzo, jamb mat ardesia, door in fumé reflective glass with Plus handle and mat ardesia frame.

pp. 185, 186
Senzafine New Entry wardrobes, design R&D Poliform, leaf doors in metal lacquer bronzo, Rail handles in mat lacquer bronzo. Surface wall panelling, design R&D Poliform, bronzed mirror and perimeter profiles mat ardesia. Nara console, design Jean-Marie Massaud, solid wood stained black elm. Ube stools, design Jean-Marie Massaud, solid wood stained black elm. Carpet Shindo celadon.

pp. 191, 192-193, 194, 195
Pivot Plus doors, design Studio Kairos, portal in metal lacquer bronzo, jamb mat ardesia, door in fumé reflective glass with mat ardesia Plus handle and frame. Wall mounted Code composition, design R&D Poliform, doors, backlit top and sides in metal lacquer bronzo, mat ardesia handles. Open storage units and structures in mat lacquer bronzo, open units backs in black elm, shelves in black elm and mat lacquer bronzo, integrated led light.

pp. 196-197, 198, 199, 200
Curve bed, design Emmanuel Gallina, padded headboard with removable cover in fabric Siro 02 lino, black elm bed base and removable cover in fabric Siro 02 lino. Removable leather roll cushions Nabuk 01 latte. Coordinated bed linen in cotton Provence 08 polvere with profile in bianco. Linus blanket granata. Kelly night tables, design Emmanuel Gallina, black elm and top in mat marble sahara noir with polyester finish. Kay Lounge pouf, design Jean-Marie Massaud, non-removable cover in leather Hairy cappuccino, mat brown nickel structure. Surface wall panelling, design R&D Poliform, fabric lino scuro and profiles mat ardesia. Carpet Shindo natural.



design Emmanuel Gallina



l Bridge, design Jean-Marie Massaud



, design Jean-Marie Massaud



otel, design Jean-Marie Massaud



POLIFORM INDOOR COLLECTION

CHAIRS



Curve, design Emmanuel Gallina



Sophie Lite, design Emmanuel Gallina



Sophie, design Emmanuel Gallina



Grace, design Emmanuel Gallina



Seattle, design Jean-Marie Massaud



Stanford Bridge, design Jean-Marie Massaud



Ventura, design Jean-Marie Massaud



Ventura, design Jean-Marie Massaud



Ipanema, design Jean-Marie Massaud



Manta, design Rodrigo Torres



Guest, design Rodolfo Dordoni

BENCHES



Nara, design Jean-Marie Massaud



Jane, design Emmanuel Gallina



Home Hotel, design Jean-Marie Massaud

POLIFORM INDOOR COLLECTION

STOOLS



Seattle, design Jean-Marie Massaud



Sophie Lite, design Emmanuel Gallina



Ventura, design Jean-Marie Massaud



Ube, design Jean-Marie Massaud



Ics, design Rodrigo Torres

TABLES



Monolith, design Emmanuel Gallina



Curve, design Emmanuel Gallina



Kensington, design Jean-Marie Massaud



Mondrian, design Jean-Marie Massaud



Henry, design Emmanuel Gallina



Concorde, design Emmanuel Gallina



Flute, design Roberto Barbieri



Blade, design R&D Poliform



Trevi, design Roberto Barbieri

SIDEBOARDS



Aiko, design Jean-Marie Massaud



Symphony, design Emmanuel Gallina



Code, design R&D Poliform

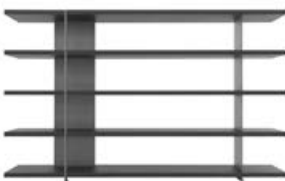


Free, design Carlo Colombo



Bristol, design Jean-Marie Massaud

BOOKCASES



Bristol, design Jean-Marie Massaud



Nara, design Jean-Marie Massaud



Home Hotel, design Jean-Marie Massaud

DESKS



Mathieu, design Emmanuel Gallina



Home Hotel, design Jean-Marie Massaud



Concorde, design Emmanuel Gallina

POLIFORM INDOOR COLLECTION

SOFAS AND ARMCHAIRS



Brera, design Jean-Marie Massaud



Sunday, design Flaviano Capriotti



Saint-Germain, design Jean-Marie Massaud



Kay Lounge, design Jean-Marie Massaud



Mad Chair, design Marcel Wanders



Mad Joker, design Marcel Wanders



Westside, design Jean-Marie Massaud



Westside Soft, design Jean-Marie Massaud



Bellport, design Jean-Marie Massaud



Mad Queen, design Marcel Wanders



Mad Chaise Longue, design Marcel Wanders



Mad King, design Marcel Wanders



Mondrian, design Jean-Marie Massaud



Bristol, design Jean-Marie Massaud



Dune, design Carlo Colombo



Gentleman Single, design Marcel Wanders



Gentleman Relax, design Marcel Wanders



Gentleman Reserved, design Marcel Wanders



Sydney, design Jean-Marie Massaud



Shanghai, design Carlo Colombo



Gentleman's Friends, design Marcel Wanders



Jane, design Emmanuel Gallina



Jane Large, design Emmanuel Gallina



Jane Lounge, design Emmanuel Gallina



Kaori, design Jean-Marie Massaud



Sunday, design Flaviano Capriotti



Curve, design Emmanuel Gallina



Santa Monica, design Jean-Marie Massaud



Santa Monica Lounge, design JM Massaud



Ipanema, design Jean-Marie Massaud



Le Club, design Jean-Marie Massaud



Stanford, design Jean-Marie Massaud



Stanford Lounge, design Jean-Marie Massaud



Gaston, design Vincent Van Duysen



Wallace, design Jean-Marie Massaud

POLIFORM INDOOR COLLECTION

COFFEE TABLES AND POUFS



Mush, design Jean-Marie Massaud



Koishi, design Jean-Marie Massaud



Westside, design Jean-Marie Massaud



Creek, design Jean-Marie Massaud



Mondrian, design Jean-Marie Massaud



Bristol, design Jean-Marie Massaud



Tribeca, design Jean-Marie Massaud



Soori, design Soo Chan



Orbit, design Jean-Marie Massaud



Nara, design Jean-Marie Massaud



Ilda, design Jean-Marie Massaud



Flute, design Roberto Barbieri



Dama, design R&D Poliform



Baba, design Roberto Barbieri



New York, design Jean-Marie Massaud



Play, design R&D Poliform



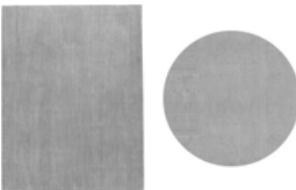
Onda, design R&D Poliform

SCREENS



Hima, design Jean-Marie Massaud

CARPETS



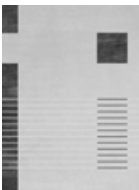
Shindo, design R&D Poliform



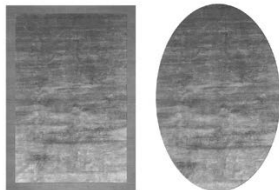
Relief, design R&D Poliform



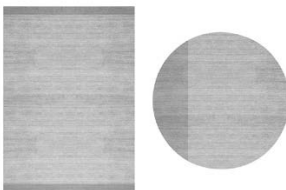
Cannelé, design R&D Poliform



Tratto, design R&D Poliform



Frame, design R&D Poliform



Plain, design R&D Poliform



Soft, design R&D Poliform



Dama, design R&D Poliform



Stripes, design R&D Poliform

POLIFORM INDOOR COLLECTION

BEDS



Yume, design Jean-Marie Massaud



Curve, design Emmanuel Gallina



Gentleman, design Marcel Wanders



Kelly, design Emmanuel Gallina



Park 1, design Carlo Colombo



Rever, design Rodolfo Dordoni



Jacqueline, design Jean-Marie Massaud



Chloe, design Carlo Colombo



Dream, design Marcel Wanders



Onda, design Paolo Piva



Arca, design R&D Poliform

NIGHT STORAGE UNITS



Gentleman, design Marcel Wanders



Kelly, design Emmanuel Gallina



Onda, design R&D Poliform



Abbinabili, design R&D Poliform

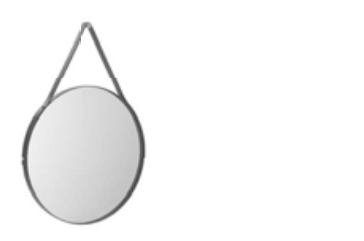


Dream, design Marcel Wanders



Chloe, design Carlo Colombo

MIRRORS



Drop, design R&D Poliform



Audrey, design Emmanuel Gallina



Sara, design Flaviano Capriotti



Circle, design R&D Poliform

POLIFORM OUTDOOR COLLECTION

CHAIRS



Magnolia, design Emmanuel Gallina



Magnolia, low version, design Emmanuel Gallina

TABLES



Monolith, design Emmanuel Gallina



Monolith, low version, design Emmanuel Gallina

COFFEE TABLES



Ketch, design Jean-Marie Massaud



Crew, design Jean-Marie Massaud



Azu, design Jean-Marie Massaud



Strata, design Emmanuel Gallina



Mad Out, design Marcel Wanders

SOFAS AND ARMCHAIRS



Ketch, design Jean-Marie Massaud



Magnolia, design Emmanuel Gallina



Mad Out, design Marcel Wanders



Ketch, design Jean-Marie Massaud



Magnolia, design Emmanuel Gallina



Mad Out, design Marcel Wanders



Le Club, design Jean-Marie Massaud



Soori Day Lounge, design Soo Chan

SUNBEDS



Magnolia, design Emmanuel Gallina

VASES



Crew, design Jean-Marie Massaud

CARPETS



Kamir, design R&D Poliform

Poliform Spa
via Montesanto 28
Casella postale n. 1
22044 Inverigo (CO) Italy
t +39 031 6951
f +39 031 699444
info@poliform.it
poliform.it

All the Poliform collections are manufactured 100% in Italy using top-class components and materials.

Poliform reserves the rights at all time to apply modifications for the functional or qualitative improvement of its products. Texts and drawings present in this brochure have a divulgative purpose: for every technical and dimensional aspect please refer to the company's price lists and their relative updating. The colour and material samples have an indicative value.

Creative Direction
Apartamento Studios

Graphic Design
Apartamento Studios

Interiors Photography
Omar Sartor

Architecture
Poliform Lab

Interiors Styling
Poliform Lab

Abigail Ozora Simpson Photography
Maureen M. Evans

Marco Minetti Photography
Nicholas Albrecht

Jon Llewelyn Photography
Thea Caroline Sneve Løvstad

Esmé Hofman Photography
Daniel Farò

1st edition December 2023
cod. 132/R1/2023

Thanks to: Abigail Ozora Simpson, Alicja Podgórska Birkner, Atipico, Azita Saïn, Studio, Concetti e Design per Ferm Living, Esmé Hofman, Flos, Folkform 2023, Formworks Studio, Yiorgos Trichas, Gardeco, Ingo Maurer, Inoda+Sveje, Karin Amdal, Kassandra Thatcher Studio, Louise Roe, Leds C4, Marco Minetti, Nicolene van der Walt, Officina Del Poggio, Paola C, Roberto Collina, Roberto Vera, Trizo 21, Salvatori Design, simone & marcel, Wonderglass, www.barbaravventura.it.



